

Product datasheet for **TA331072**

TREM2 Rabbit Polyclonal Antibody

Product data:

Product Type:	Primary Antibodies
Applications:	WB
Recommended Dilution:	WB
Reactivity:	Human
Host:	Rabbit
Isotype:	IgG
Clonality:	Polyclonal
Immunogen:	The immunogen for anti-TREM2 antibody: synthetic peptide directed towards the middle region of human TREM2. Synthetic peptide located within the following region: FPGESSEFEDAHVEHSISRSLLEGEIPFPPTSILLLLACIFLIKILAASA
Formulation:	Liquid. Purified antibody supplied in 1x PBS buffer with 0.09% (w/v) sodium azide and 2% sucrose. <i>Note that this product is shipped as lyophilized powder to China customers.</i>
Purification:	Affinity Purified
Conjugation:	Unconjugated
Storage:	Store at -20°C as received.
Stability:	Stable for 12 months from date of receipt.
Predicted Protein Size:	25 kDa
Gene Name:	triggering receptor expressed on myeloid cells 2
Database Link:	NP_061838 Entrez Gene 54209 Human Q9NZC2
Background:	The protein encoded by this gene is a membrane protein that forms a receptor signaling complex with TYROBP. The encoded protein may be involved in chronic inflammation by triggering the production of constitutive inflammatory cytokines. Defects in this gene are a cause of polycystic lipomembranous osteodysplasia with sclerosing leukoencephalopathy (PLOS).
Synonyms:	TREM-2; Trem2a; Trem2b; Trem2c

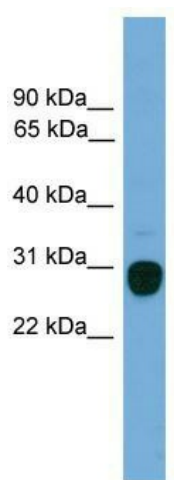


[View online »](#)

Note: Human: 100%; Horse: 92%; Rat: 85%; Bovine: 83%; Mouse: 77%

Protein Families: Druggable Genome, Secreted Protein, Transmembrane

Product images:



WB Suggested Anti-TREM2 Antibody Titration:
0.2-1 ug/ml; Positive Control: Human Muscle