

## Product datasheet for **TA331070**

### HLAF (HLA-F) Rabbit Polyclonal Antibody

#### Product data:

Product Type:	Primary Antibodies
Applications:	WB
Recommended Dilution:	WB
Reactivity:	Human
Host:	Rabbit
Isotype:	IgG
Clonality:	Polyclonal
Immunogen:	The immunogen for anti-HLA-F antibody: synthetic peptide directed towards the N terminal of human HLA-F. Synthetic peptide located within the following region: PWVEQEGPQYWEWTTGYAKANAQTDRVALRNLLRRYNQSEAGSHTLQGMN
Formulation:	Liquid. Purified antibody supplied in 1x PBS buffer with 0.09% (w/v) sodium azide and 2% sucrose. <i>Note that this product is shipped as lyophilized powder to China customers.</i>
Purification:	Affinity Purified
Conjugation:	Unconjugated
Storage:	Store at -20°C as received.
Stability:	Stable for 12 months from date of receipt.
Predicted Protein Size:	48 kDa
Gene Name:	major histocompatibility complex, class I, F
Database Link:	<a href="#">NP_001091949</a> <a href="#">Entrez Gene 3134 Human</a> <a href="#">P30511</a>

**Background:** HLA-F belongs to the HLA class I heavy chain paralogues. It is a non-classical heavy chain that forms a heterodimer with a beta-2 microglobulin light chain, with the heavy chain anchored in the membrane. Unlike most other HLA heavy chains, this molecule is localized in the endoplasmic reticulum and Golgi apparatus, with a small amount present at the cell surface in some cell types. It contains a divergent peptide-binding groove, and is thought to bind a restricted subset of peptides for immune presentation.



[View online »](#)

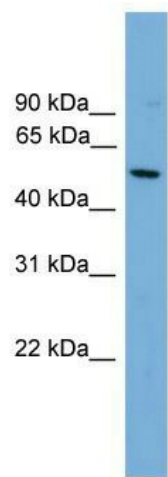
**Synonyms:** CDA12; HLA-5.4; HLA-CDA12; HLAF

**Note:** Pig: 100%; Human: 100%

**Protein Families:** Transmembrane

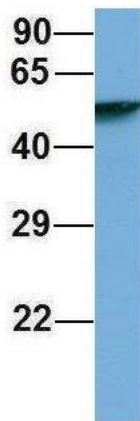
**Protein Pathways:** Allograft rejection, Antigen processing and presentation, Autoimmune thyroid disease, Cell adhesion molecules (CAMs), Endocytosis, Graft-versus-host disease, Type I diabetes mellitus, Viral myocarditis

**Product images:**



WB Suggested Anti-HLA-F Antibody Titration: 0.2-1 ug/ml; Positive Control: HepG2 cell lysate

**HLA-F**



Rabbit Anti-HLA-F  
Sample Type: Human Fetal Lung  
Antibody Concentration: 1ug/mL

Host: Rabbit; Target Name: HLA-F; Sample Tissue: Human Fetal Lung; Antibody Dilution: 1.0ug/ml