

## Product datasheet for TA331062

### PCDHGB5 Rabbit Polyclonal Antibody

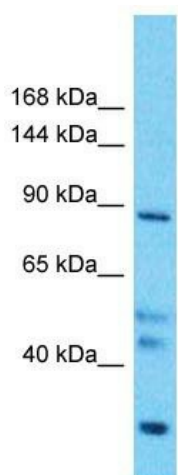
#### Product data:

Product Type:	Primary Antibodies
Applications:	WB
Recommended Dilution:	WB
Reactivity:	Human
Host:	Rabbit
Isotype:	IgG
Clonality:	Polyclonal
Immunogen:	The immunogen for Anti-PCDHGB5 antibody is: synthetic peptide directed towards the middle region of Human PCDHGB5. Synthetic peptide located within the following region: LIALIKIHDQDSGENGEVNCQLQGEVFPFKIISSSKNSYKLVTDGTLDREQ
Formulation:	Liquid. Purified antibody supplied in 1x PBS buffer with 0.09% (w/v) sodium azide and 2% sucrose.
Purification:	Affinity Purified
Conjugation:	Unconjugated
Storage:	Store at -20°C as received.
Stability:	Stable for 12 months from date of receipt.
Predicted Protein Size:	89 kDa
Gene Name:	protocadherin gamma subfamily B, 5
Database Link:	<a href="#">NP_115270</a> <a href="#">Entrez Gene 56101 Human</a> <a href="#">Q9Y5G0</a>
Background:	PCDHGB5 is a potential calcium-dependent cell-adhesion protein. It may be involved in the establishment and maintenance of specific neuronal connections in the brain.
Synonyms:	PCDH-GAMMA-B5
Note:	Human: 100%; Pig: 93%; Rat: 93%; Mouse: 93%; Guinea pig: 83%; Bovine: 79%; Horse: 77%



[View online »](#)

### Product images:



Host: Rabbit  
Target Name: PCDHGB5  
Sample Tissue: Thymus Tumor Lysate  
Antibody Dilution: 1.0 $\mu$ g/ml

Host: Rabbit; Target Name: PCDHGB5; Sample Tissue: Thymus Tumor lysates; Antibody Dilution: 1.0 $\mu$ g/ml