

## Product datasheet for **TA331055**

### PCDHA10 Rabbit Polyclonal Antibody

#### Product data:

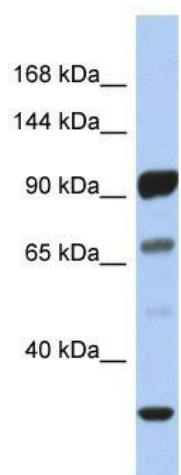
Product Type:	Primary Antibodies
Applications:	WB
Recommended Dilution:	WB
Reactivity:	Human
Host:	Rabbit
Isotype:	IgG
Clonality:	Polyclonal
Immunogen:	The immunogen for anti-PCDHA10 antibody: synthetic peptide directed towards the N terminal of human PCDHA10. Synthetic peptide located within the following region: ESRLLSRFPLEGASDADVGENALLTYKLSPNEYFVLDIINKKDKDKFPV
Formulation:	Liquid. Purified antibody supplied in 1x PBS buffer with 0.09% (w/v) sodium azide and 2% sucrose. <i>Note that this product is shipped as lyophilized powder to China customers.</i>
Purification:	Affinity Purified
Conjugation:	Unconjugated
Storage:	Store at -20°C as received.
Stability:	Stable for 12 months from date of receipt.
Predicted Protein Size:	89 kDa
Gene Name:	protocadherin alpha 10
Database Link:	<a href="#">NP_114066</a> <a href="#">Entrez Gene 56139 Human Q9Y5I2</a>



[View online »](#)

<b>Background:</b>	<p>This gene is a member of the protocadherin alpha gene cluster, one of three related gene clusters tandemly linked on chromosome five that demonstrate an unusual genomic organization similar to that of B-cell and T-cell receptor gene clusters. The alpha gene cluster is composed of 15 cadherin superfamily genes related to the mouse CNR genes and consists of 13 highly similar and 2 more distantly related coding sequences. The tandem array of 15 N-terminal exons, or variable exons, are followed by downstream C-terminal exons, or constant exons, which are shared by all genes in the cluster. The large, uninterrupted N-terminal exons each encode six cadherin ectodomains while the C-terminal exons encode the cytoplasmic domain. These neural cadherin-like cell adhesion proteins are integral plasma membrane proteins that most likely play a critical role in the establishment and function of specific cell-cell connections in the brain. This gene is a member of the protocadherin alpha gene cluster, one of three related gene clusters tandemly linked on chromosome five that demonstrate an unusual genomic organization similar to that of B-cell and T-cell receptor gene clusters. The alpha gene cluster is composed of 15 cadherin superfamily genes related to the mouse CNR genes and consists of 13 highly similar and 2 more distantly related coding sequences. The tandem array of 15 N-terminal exons, or variable exons, are followed by downstream C-terminal exons, or constant exons, which are shared by all genes in the cluster. The large, uninterrupted N-terminal exons each encode six cadherin ectodomains while the C-terminal exons encode the cytoplasmic domain. These neural cadherin-like cell adhesion proteins are integral plasma membrane proteins that most likely play a critical role in the establishment and function of specific cell-cell connections in the brain. Alternative splicing has been observed and additional variants have been suggested but their full-length nature has yet to be determined.</p>
<b>Synonyms:</b>	CNR8; CNRN8; CNRS8; CRNR8; PCDH-ALPHA10
<b>Note:</b>	Pig: 100%; Rat: 100%; Human: 100%; Mouse: 100%; Rabbit: 100%; Guinea pig: 100%; Dog: 93%; Horse: 93%; Bovine: 93%
<b>Protein Families:</b>	Secreted Protein

## Product images:



WB Suggested Anti-PCDHA10 Antibody Titration:  
0.2-1 ug/ml; ELISA Titer: 1:62500; Positive Control:  
Human Stomach