

## Product datasheet for **TA331052**

### **RAB5IF Rabbit Polyclonal Antibody**

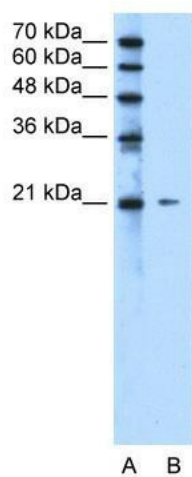
#### **Product data:**

Product Type:	Primary Antibodies
Applications:	WB
Recommended Dilution:	WB
Reactivity:	Human
Host:	Rabbit
Isotype:	IgG
Clonality:	Polyclonal
Immunogen:	The immunogen for anti-C20orf24 antibody: synthetic peptide directed towards the N terminal of human C20orf24. Synthetic peptide located within the following region: MSGGRRKEEPPQPLANGALKVSVWSKVLRSDAAWEDKDEFDVIYWFRQ
Formulation:	Liquid. Purified antibody supplied in 1x PBS buffer with 0.09% (w/v) sodium azide and 2% sucrose. <i>Note that this product is shipped as lyophilized powder to China customers.</i>
Purification:	Protein A purified
Conjugation:	Unconjugated
Storage:	Store at -20°C as received.
Stability:	Stable for 12 months from date of receipt.
Predicted Protein Size:	15 kDa
Gene Name:	chromosome 20 open reading frame 24
Database Link:	<a href="#">NP_061328</a> <a href="#">Entrez Gene 55969 Human</a> <a href="#">Q9BUV8</a>
Background:	The function remain unknown.
Synonyms:	PNAS-11; RIP5
Note:	Dog: 100%; Rat: 100%; Horse: 100%; Human: 100%; Mouse: 100%; Rabbit: 100%; Pig: 93%; Guinea pig: 93%; Yeast: 90%; Bovine: 86%
Protein Families:	Transmembrane



[View online »](#)

## Product images:



WB Suggested Anti-C20orf24 Antibody Titration:  
2.5ug/ml; Positive Control: Jurkat cell lysate