

Product datasheet for **TA331051**

Sulfatase 2 (SULF2) Rabbit Polyclonal Antibody

Product data:

Product Type:	Primary Antibodies
Applications:	IHC, WB
Recommended Dilution:	WB, IHC
Reactivity:	Human
Host:	Rabbit
Isotype:	IgG
Clonality:	Polyclonal
Immunogen:	The immunogen for anti-SULF2 antibody: synthetic peptide directed towards the C terminal of human SULF2. Synthetic peptide located within the following region: DVLNQLHVQLMELRSCKGYKQCNPRTNMDLGLKDGGSYEQYRQFQRRKW
Formulation:	Liquid. Purified antibody supplied in 1x PBS buffer with 0.09% (w/v) sodium azide and 2% sucrose. <i>Note that this product is shipped as lyophilized powder to China customers.</i>
Purification:	Affinity Purified
Conjugation:	Unconjugated
Storage:	Store at -20°C as received.
Stability:	Stable for 12 months from date of receipt.
Predicted Protein Size:	98 kDa
Gene Name:	sulfatase 2
Database Link:	NP_061325 Entrez Gene 55959 Human Q8IWU5



[View online »](#)

Background:

Heparan sulfate proteoglycans (HSPGs) act as coreceptors for numerous heparin-binding growth factors and cytokines and are involved in cell signaling. Heparan sulfate 6-O-endosulfatases, such as SULF2, selectively remove 6-O-sulfate groups from heparan sulfate. This activity modulates the effects of heparan sulfate by altering binding sites for signaling molecules. Heparan sulfate proteoglycans (HSPGs) act as coreceptors for numerous heparin-binding growth factors and cytokines and are involved in cell signaling. Heparan sulfate 6-O-endosulfatases, such as SULF2, selectively remove 6-O-sulfate groups from heparan sulfate. This activity modulates the effects of heparan sulfate by altering binding sites for signaling molecules (Dai et al., 2005 [PubMed 16192265]). [supplied by OMIM]

Synonyms:

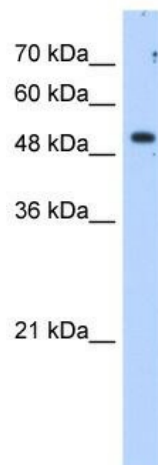
HSULF-2

Note:

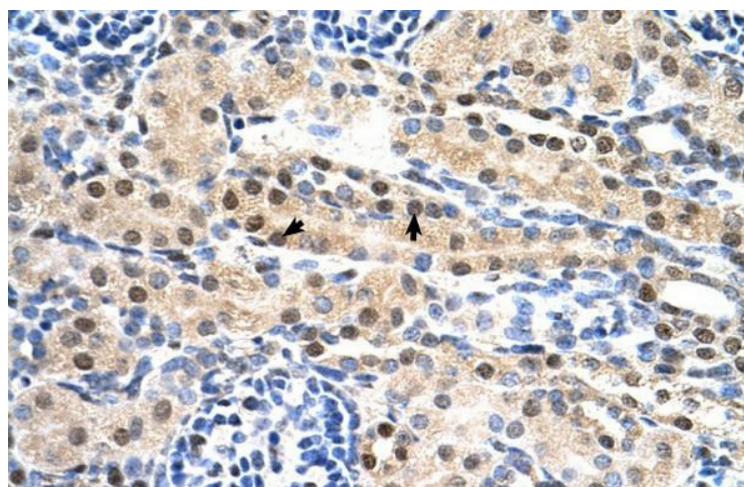
Dog: 100%; Rat: 100%; Horse: 100%; Human: 100%; Rabbit: 100%; Pig: 93%; Mouse: 93%; Bovine: 79%

Protein Families:

Druggable Genome, Transmembrane

Product images:

WB Suggested Anti-SULF2 Antibody Titration:
1.25ug/ml; Positive Control: HepG2 cell lysate



Human kidney