

Product datasheet for **TA331050**

THSD1 Rabbit Polyclonal Antibody

Product data:

Product Type:	Primary Antibodies
Applications:	WB
Recommended Dilution:	WB
Reactivity:	Human
Host:	Rabbit
Isotype:	IgG
Clonality:	Polyclonal
Immunogen:	The immunogen for Anti-THSD1 antibody is: synthetic peptide directed towards the middle region of Human THSD1. Synthetic peptide located within the following region: AQQQWVEFGCAPLGPEAYVTVLKLLGRDSVITSTGPIDLAQKFGYKLV
Formulation:	Liquid. Purified antibody supplied in 1x PBS buffer with 0.09% (w/v) sodium azide and 2% sucrose. <i>Note that this product is shipped as lyophilized powder to China customers.</i>
Purification:	Affinity Purified
Conjugation:	Unconjugated
Storage:	Store at -20°C as received.
Stability:	Stable for 12 months from date of receipt.
Predicted Protein Size:	47 kDa
Gene Name:	thrombospondin type 1 domain containing 1
Database Link:	NP_061146 Entrez Gene 55901 Human Q9NS62
Background:	The protein encoded by this gene contains a type 1 thrombospondin domain, which is found in a number of proteins involved in the complement pathway, as well as in extracellular matrix proteins. Alternatively spliced transcript variants encoding different isoforms have been observed for this gene.
Synonyms:	TMTSP; UNQ3010

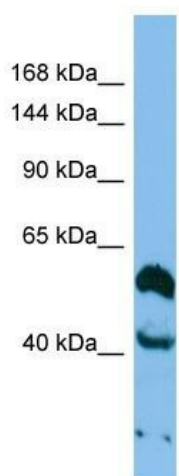


[View online »](#)

Note: Dog: 100%; Pig: 100%; Rat: 100%; Horse: 100%; Human: 100%; Mouse: 100%; Bovine: 100%; Guinea pig: 100%; Rabbit: 93%

Protein Families: Transmembrane

Product images:



Host: Rabbit
Target Name: THSD1
Sample Tissue: A549 Cell Lysate
Antibody Dilution: 1.0 μ g/ml

Host: Rabbit; Target Name: THSD1; Sample Tissue: A549 Whole cell lysates; Antibody Dilution: 1.0 μ g/ml