

Product datasheet for **TA331049**

NSMase2 (SMPD3) Rabbit Polyclonal Antibody

Product data:

Product Type:	Primary Antibodies
Applications:	WB
Recommended Dilution:	WB
Reactivity:	Human
Host:	Rabbit
Isotype:	IgG
Clonality:	Polyclonal
Immunogen:	The immunogen for anti-SMPD3 antibody: synthetic peptide directed towards the middle region of human SMPD3. Synthetic peptide located within the following region: RPPEADDPVPGGQARNGAGGGPRGQTPNHNQQDGDGSGSLGSPSASRESLV
Formulation:	Liquid. Purified antibody supplied in 1x PBS buffer with 0.09% (w/v) sodium azide and 2% sucrose. <i>Note that this product is shipped as lyophilized powder to China customers.</i>
Purification:	Affinity Purified
Conjugation:	Unconjugated
Storage:	Store at -20°C as received.
Stability:	Stable for 12 months from date of receipt.
Predicted Protein Size:	71 kDa
Gene Name:	sphingomyelin phosphodiesterase 3
Database Link:	NP_061137 Entrez Gene 55512 Human Q9NY59
Background:	SMPD3 catalyzes the hydrolysis of sphingomyelin to form ceramide and phosphocholine. Ceramide mediates numerous cellular functions, such as apoptosis and growth arrest, and is capable of regulating these 2 cellular events independently. Also hydrolyzes sphingosylphosphocholine. SMPD3 regulates the cell cycle by acting as a growth suppressor in confluent cells. It probably acts as a regulator of postnatal development and participates in bone and dentin mineralization.



[View online »](#)

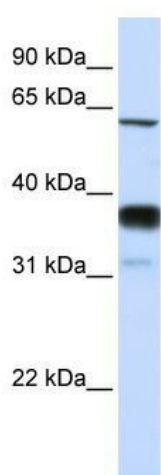
Synonyms: NSMASE2

Note: Dog: 100%; Pig: 100%; Rat: 100%; Human: 100%; Mouse: 100%; Bovine: 100%; Rabbit: 100%; Guinea pig: 100%; Horse: 93%

Protein Families: Transmembrane

Protein Pathways: Metabolic pathways, Sphingolipid metabolism

Product images:



WB Suggested Anti-SMPD3 Antibody Titration:
0.2-1 ug/ml; ELISA Titer: 1:12500; Positive Control:
Human Lung