

## Product datasheet for **TA331048**

### LRRC59 Rabbit Polyclonal Antibody

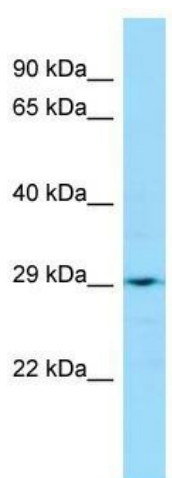
#### Product data:

Product Type:	Primary Antibodies
Applications:	WB
Recommended Dilution:	WB
Reactivity:	Human
Host:	Rabbit
Isotype:	IgG
Clonality:	Polyclonal
Immunogen:	The immunogen for Anti-LRRC59 antibody is: synthetic peptide directed towards the middle region of Human LRRC59. Synthetic peptide located within the following region: KEYDALKAAKREQEKKPKKEANQAPKSKSGSRPRKPPPRKHTRSWAVLKL
Formulation:	Liquid. Purified antibody supplied in 1x PBS buffer with 0.09% (w/v) sodium azide and 2% sucrose.
Purification:	Affinity Purified
Conjugation:	Unconjugated
Storage:	Store at -20°C as received.
Stability:	Stable for 12 months from date of receipt.
Predicted Protein Size:	35 kDa
Gene Name:	leucine rich repeat containing 59
Database Link:	<a href="#">NP_060979</a> <a href="#">Entrez Gene 55379 Human</a> <a href="#">Q96AG4</a>
Background:	The function remains unknown.
Synonyms:	p34; PRO1855
Note:	Dog: 100%; Pig: 100%; Rat: 100%; Human: 100%; Mouse: 100%; Rabbit: 100%; Horse: 93%; Bovine: 93%; Guinea pig: 93%
Protein Families:	Transmembrane

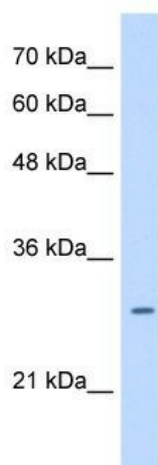


[View online »](#)

## Product images:



Host: Rabbit; Target Name: LRRC59; Sample  
Tissue: Jurkat Whole Cell lysates; Antibody  
Dilution: 1.0ug/ml



WB Suggested Anti-LRRC59 Antibody Titration:  
0.25ug/ml; Positive Control: HepG2 cell lysate;  
LRRC59 is supported by BioGPS gene expression  
data to be expressed in HepG2