

Product datasheet for **TA331047**

LRRC59 Rabbit Polyclonal Antibody

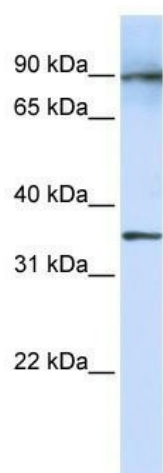
Product data:

Product Type:	Primary Antibodies
Applications:	WB
Recommended Dilution:	WB
Reactivity:	Human
Host:	Rabbit
Isotype:	IgG
Clonality:	Polyclonal
Immunogen:	The immunogen for anti-LRRC59 antibody: synthetic peptide directed towards the N terminal of human LRRC59. Synthetic peptide located within the following region: TKAGSKGGNLRDKLDGNELDLSLSDLNEVPVKELAALPKATILDLSCKNL
Formulation:	Liquid. Purified antibody supplied in 1x PBS buffer with 0.09% (w/v) sodium azide and 2% sucrose. <i>Note that this product is shipped as lyophilized powder to China customers.</i>
Purification:	Affinity Purified
Conjugation:	Unconjugated
Storage:	Store at -20°C as received.
Stability:	Stable for 12 months from date of receipt.
Predicted Protein Size:	35 kDa
Gene Name:	leucine rich repeat containing 59
Database Link:	NP_060979 Entrez Gene 55379 Human Q96AG4
Background:	The exact function of LRRC59 remains unknown.
Synonyms:	p34; PRO1855
Note:	Dog: 100%; Pig: 100%; Rat: 100%; Human: 100%; Mouse: 100%; Bovine: 100%; Guinea pig: 100%; Rabbit: 93%
Protein Families:	Transmembrane



[View online »](#)

Product images:



WB Suggested Anti-LRRC59 Antibody Titration: 1 ug/ml; Positive Control: Fetal Lung cell lysate