

## Product datasheet for **TA331046**

### **TMEM126B Rabbit Polyclonal Antibody**

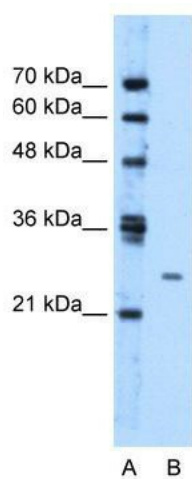
#### **Product data:**

Product Type:	Primary Antibodies
Applications:	WB
Recommended Dilution:	WB
Reactivity:	Human
Host:	Rabbit
Isotype:	IgG
Clonality:	Polyclonal
Immunogen:	The immunogen for anti-TMEM126B antibody: synthetic peptide directed towards the middle region of human TMEM126B. Synthetic peptide located within the following region: VFRSSLIGIVCGVFPSSLAFTKNGRLATKYHTVPLPPKGRVLIHWMTLC
Formulation:	Liquid. Purified antibody supplied in 1x PBS buffer with 0.09% (w/v) sodium azide and 2% sucrose. <i>Note that this product is shipped as lyophilized powder to China customers.</i>
Purification:	Protein A purified
Conjugation:	Unconjugated
Storage:	Store at -20°C as received.
Stability:	Stable for 12 months from date of receipt.
Predicted Protein Size:	23 kDa
Gene Name:	transmembrane protein 126B
Database Link:	<a href="#">NP_060950</a> <a href="#">Entrez Gene 55863 Human</a> <a href="#">Q8IUX1</a>
Background:	The function remains unknown.
Synonyms:	HT007
Note:	Human: 100%; Pig: 93%; Horse: 93%; Guinea pig: 93%; Dog: 92%; Bovine: 92%; Rat: 86%; Mouse: 86%; Rabbit: 86%
Protein Families:	Transmembrane



[View online »](#)

## Product images:



WB Suggested Anti-TMEM126B Antibody  
Titration: 1.25ug/ml; Positive Control: Jurkat cell  
lysate