

Product datasheet for **TA331045**

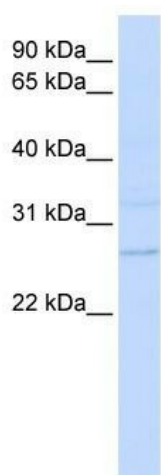
TMEM126B Rabbit Polyclonal Antibody

Product data:

Product Type:	Primary Antibodies
Applications:	WB
Recommended Dilution:	WB
Reactivity:	Human
Host:	Rabbit
Isotype:	IgG
Clonality:	Polyclonal
Immunogen:	The immunogen for anti-TMEM126B antibody: synthetic peptide directed towards the N terminal of human TMEM126B. Synthetic peptide located within the following region: AASMHGQSPSPLEDAKLRRPMVIEIIEKNFDYLRKEMTQNIYQMATFGTT
Formulation:	Liquid. Purified antibody supplied in 1x PBS buffer with 0.09% (w/v) sodium azide and 2% sucrose. <i>Note that this product is shipped as lyophilized powder to China customers.</i>
Purification:	Affinity Purified
Conjugation:	Unconjugated
Storage:	Store at -20°C as received.
Stability:	Stable for 12 months from date of receipt.
Predicted Protein Size:	23 kDa
Gene Name:	transmembrane protein 126B
Database Link:	NP_060950 Entrez Gene 55863 Human Q8IUX1
Background:	It belongs to the TMEM126 family. The function remains unknown.
Synonyms:	HT007
Note:	Human: 100%; Rabbit: 92%; Dog: 86%
Protein Families:	Transmembrane



[View online »](#)

Product images:

WB Suggested Anti-TMEM126B Antibody
Titration: 0.2-1 ug/ml; ELISA Titer: 1:62500;
Positive Control: MCF7 cell lysate; TMEM126B is
supported by BioGPS gene expression data to be
expressed in MCF7