

Product datasheet for **TA331044**

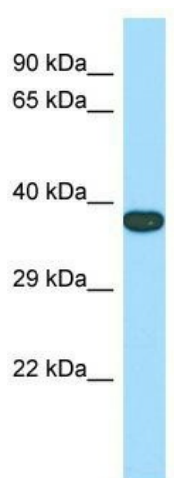
Tmem165 Rabbit Polyclonal Antibody

Product data:

Product Type:	Primary Antibodies
Applications:	WB
Recommended Dilution:	WB
Reactivity:	Mouse
Host:	Rabbit
Isotype:	IgG
Clonality:	Polyclonal
Immunogen:	The immunogen for Anti-Tmem165 antibody is: synthetic peptide directed towards the N-terminal region of Mouse Tmem165. Synthetic peptide located within the following region: MAAAARGSGRAPTRRLVLLLLQLLWAPAGVRAGPEEDLSHRNQEPPAPA
Formulation:	Liquid. Purified antibody supplied in 1x PBS buffer with 0.09% (w/v) sodium azide and 2% sucrose. <i>Note that this product is shipped as lyophilized powder to China customers.</i>
Conjugation:	Unconjugated
Storage:	Store at -20°C as received.
Stability:	Stable for 12 months from date of receipt.
Predicted Protein Size:	35 kDa
Gene Name:	transmembrane protein 165
Database Link:	NP_035756 Entrez Gene 21982 Mouse P52875
Background:	The function of this protein remains unknown.
Synonyms:	TMPT27; TPARL
Note:	Dog: 100%; Human: 100%; Rat: 93%; Mouse: 93%; Bovine: 93%; Pig: 85%; Guinea pig: 85%



[View online »](#)

Product images:

Host: Rabbit; Target Name: Tmem165; Sample
Tissue: Mouse Stomach lysates; Antibody
Dilution: 1.0ug/ml