

Product datasheet for **TA331043**

TEX2 Rabbit Polyclonal Antibody

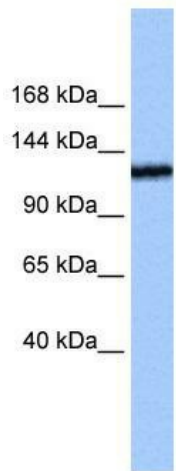
Product data:

Product Type:	Primary Antibodies
Applications:	WB
Recommended Dilution:	WB
Reactivity:	Human
Host:	Rabbit
Isotype:	IgG
Clonality:	Polyclonal
Immunogen:	The immunogen for anti-TEX2 antibody: synthetic peptide directed towards the N terminal of human TEX2. Synthetic peptide located within the following region: KSLSTEVEPKESPHPARHRHLMKTLVKSLSTDTSRQESDTSYKPPDSKL
Formulation:	Liquid. Purified antibody supplied in 1x PBS buffer with 0.09% (w/v) sodium azide and 2% sucrose.
Purification:	Affinity Purified
Conjugation:	Unconjugated
Storage:	Store at -20°C as received.
Stability:	Stable for 12 months from date of receipt.
Predicted Protein Size:	126 kDa
Gene Name:	testis expressed 2
Database Link:	NP_060939 Entrez Gene 55852 Human Q8IWB9
Background:	TEX2 is a multi-pass membrane protein. The exact function of TEX2 remains unknown.
Synonyms:	HT008; TMEM96
Note:	Dog: 100%; Pig: 100%; Rat: 100%; Human: 100%; Mouse: 100%; Bovine: 100%; Rabbit: 100%; Guinea pig: 100%
Protein Families:	Transmembrane



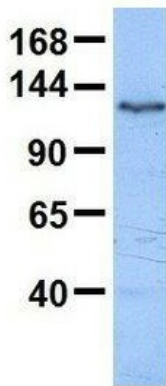
[View online »](#)

Product images:



WB Suggested Anti-TEX2 Antibody Titration: 0.2-1 ug/ml; Positive Control: Jurkat cell lysate

TEX2



Rabbit Anti-TEX2
 Sample Type: Human HepG2
 Antibody Concentration: 1ug/mL

Host: Rabbit; Target Name: TEX2; Sample Tissue: Human HepG2; Antibody Dilution: 1.0ug/ml; TEX2 is supported by BioGPS gene expression data to be expressed in HepG2