

Product datasheet for **TA331040**

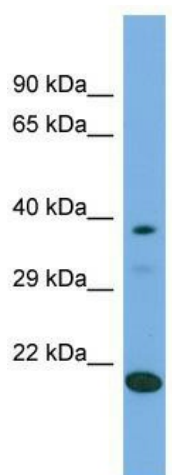
LIPT2 Rabbit Polyclonal Antibody

Product data:

Product Type:	Primary Antibodies
Applications:	WB
Recommended Dilution:	WB
Reactivity:	Human
Host:	Rabbit
Isotype:	IgG
Clonality:	Polyclonal
Immunogen:	The immunogen for Anti-LIPT2 antibody is: synthetic peptide directed towards the C-terminal region of Human LIPT2. Synthetic peptide located within the following region: KICAIGVRCGRHITSHGLALNCSTDLTWFEHIVPCGLVGTGVTLSKELQ
Formulation:	Liquid. Purified antibody supplied in 1x PBS buffer with 0.09% (w/v) sodium azide and 2% sucrose. <i>Note that this product is shipped as lyophilized powder to China customers.</i>
Conjugation:	Unconjugated
Storage:	Store at -20°C as received.
Stability:	Stable for 12 months from date of receipt.
Predicted Protein Size:	25 kDa
Gene Name:	lipoyl(octanoyl) transferase 2 (putative)
Database Link:	NP_001138341 Entrez Gene 387787 Human A6NK58
Background:	LIPT2 catalyzes the transfer of endogenously produced octanoic acid from octanoyl-acyl-carrier-protein onto the lipoyl domains of lipoate-dependent enzymes. Lipoyl-ACP can also act as a substrate although octanoyl-ACP is likely to be the physiological substrate.
Synonyms:	LIPT2
Note:	Pig: 93%; Rat: 93%; Human: 93%; Guinea pig: 93%; Mouse: 92%; Dog: 86%; Horse: 86%; Bovine: 86%; Rabbit: 86%; Zebrafish: 79%
Protein Pathways:	Lipoic acid metabolism, Metabolic pathways



[View online »](#)

Product images:

Host: Rabbit; Target Name: LIPT2; Sample Tissue:
293T Whole Cell lysates; Antibody Dilution:
1.0ug/ml