

## Product datasheet for **TA331038**

### Setd5 Rabbit Polyclonal Antibody

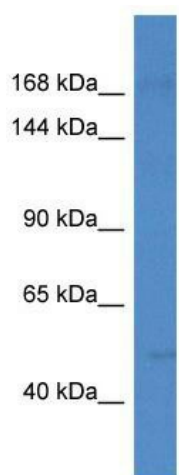
#### Product data:

Product Type:	Primary Antibodies
Applications:	WB
Recommended Dilution:	WB
Reactivity:	Rat
Host:	Rabbit
Isotype:	IgG
Clonality:	Polyclonal
Immunogen:	The immunogen for anti-Setd5 antibody: synthetic peptide corresponding to a region of Rat. Synthetic peptide located within the following region: ETVPTWCPCGLSQDGFLLNCDKCRGMSRGKVIRLHRRKQDNISGGDSSAT
Formulation:	Liquid. Purified antibody supplied in 1x PBS buffer with 0.09% (w/v) sodium azide and 2% sucrose.
Conjugation:	Unconjugated
Storage:	Store at -20°C as received.
Stability:	Stable for 12 months from date of receipt.
Predicted Protein Size:	160 kDa
Gene Name:	SET domain containing 5
Database Link:	<a href="#">NP_001100084</a> <a href="#">Entrez Gene 297514 Rat</a>
Background:	The function of this protein remains unknown.
Synonyms:	DKFZp686J18276; FLJ10707; KIAA1757; OTTHUMP00000197546
Note:	Dog: 100%; Pig: 100%; Rat: 100%; Horse: 100%; Human: 100%; Mouse: 100%; Bovine: 100%; Rabbit: 100%; Guinea pig: 100%



[View online »](#)

Product images:



WB Suggested Anti-Setd5 Antibody; Titration: 1.0 ug/ml; Positive Control: Rat Liver