

Product datasheet for **TA331036**

C6orf140 (GLYATL3) Rabbit Polyclonal Antibody

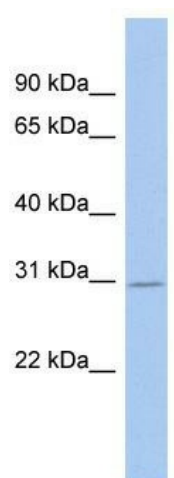
Product data:

Product Type:	Primary Antibodies
Applications:	WB
Recommended Dilution:	WB
Reactivity:	Human
Host:	Rabbit
Isotype:	IgG
Clonality:	Polyclonal
Immunogen:	The immunogen for Anti-GLYATL3 antibody is: synthetic peptide directed towards the C-terminal region of Human GLYATL3. Synthetic peptide located within the following region: WSITDQFATMCHGYTLPEHRRKGY SRLVALTLARKLQSRGFPSQGNVLDD
Formulation:	Liquid. Purified antibody supplied in 1x PBS buffer with 0.09% (w/v) sodium azide and 2% sucrose.
Conjugation:	Unconjugated
Storage:	Store at -20°C as received.
Stability:	Stable for 12 months from date of receipt.
Predicted Protein Size:	31 kDa
Gene Name:	glycine-N-acyltransferase like 3
Database Link:	NP_001010904 Entrez Gene 389396 Human Q5SZD4
Background:	The exact function of C6orf140 remains unknown.
Synonyms:	bA28H17.2; C6orf140
Note:	Dog: 100%; Pig: 100%; Rat: 100%; Horse: 100%; Human: 100%; Mouse: 100%; Rabbit: 100%; Guinea pig: 100%; Bovine: 93%



[View online »](#)

Product images:



Host: Rabbit; Target Name: GLYATL3; Sample
Tissue: Fetal Brain lysates; Antibody Dilution:
1.0ug/ml