

Product datasheet for **TA331035**

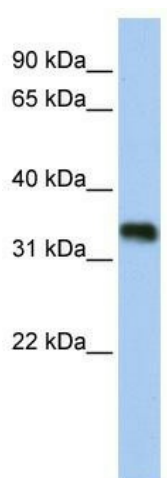
C6orf140 Rabbit Polyclonal Antibody

Product data:

Product Type:	Primary Antibodies
Applications:	WB
Recommended Dilution:	WB
Reactivity:	Human
Host:	Rabbit
Isotype:	IgG
Clonality:	Polyclonal
Immunogen:	The immunogen for anti-C6orf140 antibody: synthetic peptide directed towards the N terminal of human C6orf140. Synthetic peptide located within the following region: NPFQKEVLDSPDFKAVITRRQREAETDNLHDHYTNAYAVFYKDVRAIRYRQ
Formulation:	Liquid. Purified antibody supplied in 1x PBS buffer with 0.09% (w/v) sodium azide and 2% sucrose.
Purification:	Affinity Purified
Conjugation:	Unconjugated
Storage:	Store at -20°C as received.
Stability:	Stable for 12 months from date of receipt.
Predicted Protein Size:	33 kDa
Database Link:	Entrez Gene 389396 Human
Background:	The exact function of C6orf140 remains unknown.
Note:	Human: 100%; Dog: 93%; Pig: 93%; Rat: 93%; Mouse: 93%; Bovine: 93%; Guinea pig: 93%



[View online »](#)

Product images:

WB Suggested Anti-C6orf140 Antibody Titration:
0.2-1 ug/ml; Positive Control: Human brain