

Product datasheet for **TA331033**

ALG1 Rabbit Polyclonal Antibody

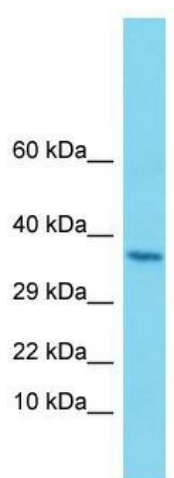
Product data:

Product Type:	Primary Antibodies
Applications:	WB
Recommended Dilution:	WB
Reactivity:	Human
Host:	Rabbit
Isotype:	IgG
Clonality:	Polyclonal
Immunogen:	The immunogen for Anti-ALG1 antibody is: synthetic peptide directed towards the C-terminal region of Human ALG1. Synthetic peptide located within the following region: VKHEENGLVFEDSEELAAQLQMLFSNFPDPAGKLNQFRKNLRESQQLRWD
Formulation:	Liquid. Purified antibody supplied in 1x PBS buffer with 0.09% (w/v) sodium azide and 2% sucrose. <i>Note that this product is shipped as lyophilized powder to China customers.</i>
Conjugation:	Unconjugated
Storage:	Store at -20°C as received.
Stability:	Stable for 12 months from date of receipt.
Predicted Protein Size:	38 kDa
Gene Name:	ALG1, chitobiosyldiphosphodolichol beta-mannosyltransferase
Database Link:	NP_061982 Entrez Gene 56052 Human Q9BT22
Background:	The function of this protein remains unknown.
Synonyms:	CDG1K; hMat-1; HMAT1; HMT-1; HMT1; Mat-1; MT-1
Note:	Human: 100%; Dog: 93%; Pig: 92%; Rat: 92%; Guinea pig: 92%; Mouse: 86%; Bovine: 86%; Rabbit: 86%
Protein Families:	Transmembrane
Protein Pathways:	Metabolic pathways, N-Glycan biosynthesis



[View online »](#)

Product images:



Host: Rabbit; Target Name: ALG1; Sample Tissue:
Uterus Tumor lysates; Antibody Dilution:
1.0ug/ml