

## Product datasheet for **TA331032**

### Gstt4 Rabbit Polyclonal Antibody

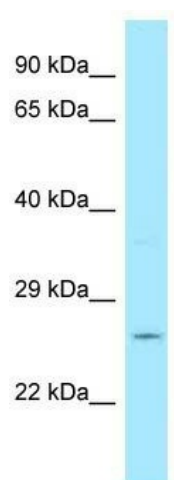
#### Product data:

Product Type:	Primary Antibodies
Applications:	WB
Recommended Dilution:	WB
Reactivity:	Human
Host:	Rabbit
Isotype:	IgG
Clonality:	Polyclonal
Immunogen:	The immunogen for Anti-GSTT4 antibody is: synthetic peptide directed towards the C-terminal region of Human GSTT4. Synthetic peptide located within the following region: LAEWRMQVELNIGSGLFREAHDRMLQLADWDFSTLDSMVKENISELLKKS
Formulation:	Liquid. Purified antibody supplied in 1x PBS buffer with 0.09% (w/v) sodium azide and 2% sucrose.
Purification:	Affinity Purified
Conjugation:	Unconjugated
Storage:	Store at -20°C as received.
Stability:	Stable for 12 months from date of receipt.
Predicted Protein Size:	26 kDa
Gene Name:	glutathione S-transferase, theta 4
Database Link:	<a href="#">NP_083748</a> <a href="#">Entrez Gene 75886 Mouse</a> <a href="#">Q9D4P7</a>
Background:	Conjugation of reduced glutathione to a wide number of exogenous and endogenous hydrophobic electrophiles.
Synonyms:	4930583C14Rik; AI507011
Note:	Human: 93%; Dog: 79%; Pig: 79%; Rat: 79%; Horse: 79%; Rabbit: 79%; Guinea pig: 79%



[View online »](#)

## Product images:



Host: Rabbit; Target Name: GSTT4; Sample  
Tissue: ACHN whole cell lysates; Antibody  
Dilution: 1.0ug/ml