

## Product datasheet for **TA331030**

### DNA Primase (PRIM2) Rabbit Polyclonal Antibody

#### Product data:

Product Type:	Primary Antibodies
Applications:	WB
Recommended Dilution:	WB
Reactivity:	Human
Host:	Rabbit
Isotype:	IgG
Clonality:	Polyclonal
Immunogen:	The immunogen for anti-PRIM2 antibody: synthetic peptide directed towards the middle region of human PRIM2. Synthetic peptide located within the following region: QDFLKDSQLQFEAISDEEKTREQEIVASSPSLSGLKLGFKSIYKPPFAS
Formulation:	Liquid. Purified antibody supplied in 1x PBS buffer with 0.09% (w/v) sodium azide and 2% sucrose. <i>Note that this product is shipped as lyophilized powder to China customers.</i>
Purification:	Protein A purified
Conjugation:	Unconjugated
Storage:	Store at -20°C as received.
Stability:	Stable for 12 months from date of receipt.
Predicted Protein Size:	37 kDa
Gene Name:	primase (DNA) subunit 2
Database Link:	<a href="#">NP_000938</a> <a href="#">Entrez Gene 5558 Human</a> <a href="#">P49643</a>
Background:	The replication of DNA in eukaryotic cells is carried out by a complex chromosomal replication apparatus, in which DNA polymerase alpha and primase are two key enzymatic components. Primase, which is a heterodimer of a small subunit and a large subunit, synthesizes small RNA primers for the Okazaki fragments made during discontinuous DNA replication.
Synonyms:	p58; PRIM2A

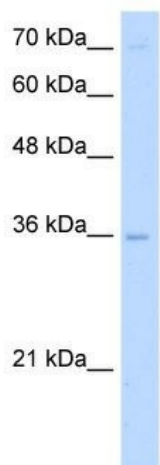


[View online »](#)

**Note:** Human: 100%; Pig: 93%; Rat: 93%; Mouse: 93%; Dog: 86%; Horse: 86%; Bovine: 86%; Rabbit: 86%; Guinea pig: 79%

**Protein Pathways:** DNA replication, Metabolic pathways, Purine metabolism, Pyrimidine metabolism

**Product images:**



WB Suggested Anti-PRIM2 Antibody Titration:  
5.0ug/ml; Positive Control: HepG2 cell lysate;  
There is BioGPS gene expression data showing  
that PRIM2 is expressed in HepG2