

## Product datasheet for **TA331029**

### Mboat2 Rabbit Polyclonal Antibody

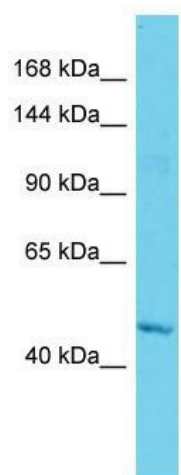
#### Product data:

Product Type:	Primary Antibodies
Applications:	WB
Recommended Dilution:	WB
Reactivity:	Rat
Host:	Rabbit
Isotype:	IgG
Clonality:	Polyclonal
Immunogen:	The immunogen for Anti-Mboat2 antibody is: synthetic peptide directed towards the middle region of Rat Mboat2. Synthetic peptide located within the following region: GMFRKDEELTPSQRGLAVRRMPSLLEYVSYTCNFMGILAGPLCSYKDYIA
Formulation:	Liquid. Purified antibody supplied in 1x PBS buffer with 0.09% (w/v) sodium azide and 2% sucrose. <i>Note that this product is shipped as lyophilized powder to China customers.</i>
Conjugation:	Unconjugated
Storage:	Store at -20°C as received.
Stability:	Stable for 12 months from date of receipt.
Predicted Protein Size:	57 kDa
Gene Name:	membrane bound O-acyltransferase domain containing 2
Database Link:	<a href="#">NP_001101486</a> <a href="#">Entrez Gene 313997 Rat Q3T1J2</a>
Background:	Lysophospholipid acyltransferases (LPLATs) catalyze the reacylation step of the phospholipid remodeling pathway also known as the Lands cycle.
Synonyms:	FLJ14415; FLJ90298; LPAAT; LPCAT4; LPEAT; OACT2
Note:	Human: 100%; Dog: 93%; Pig: 86%; Rat: 86%; Horse: 86%; Mouse: 86%; Bovine: 86%; Rabbit: 86%; Guinea pig: 86%



[View online »](#)

## Product images:



Host: Rabbit; Target Name: Mboat2; Sample  
Tissue: Rat Thymus lysates; Antibody Dilution:  
1.0ug/ml