

Product datasheet for **TA331028**

MEKK2 (MAP3K2) Rabbit Polyclonal Antibody

Product data:

Product Type:	Primary Antibodies
Applications:	WB
Recommended Dilution:	WB
Reactivity:	Human
Host:	Rabbit
Isotype:	IgG
Clonality:	Polyclonal
Immunogen:	The immunogen for anti-MAP3K2 antibody: synthetic peptide directed towards the N terminal of human MAP3K2. Synthetic peptide located within the following region: AERKKRLSIIGPISRDRSSPPPGYIPDELHQVARNGSFTSINSEGEFIPE
Formulation:	Liquid. Purified antibody supplied in 1x PBS buffer with 0.09% (w/v) sodium azide and 2% sucrose. <i>Note that this product is shipped as lyophilized powder to China customers.</i>
Purification:	Affinity Purified
Conjugation:	Unconjugated
Storage:	Store at -20°C as received.
Stability:	Stable for 12 months from date of receipt.
Predicted Protein Size:	70 kDa
Gene Name:	mitogen-activated protein kinase kinase kinase 2
Database Link:	NP_006600 Entrez Gene 10746 Human Q9Y2U5



[View online »](#)

Background:

MAP3K2 is a component of a protein kinase signal transduction cascade. It regulates the JNK and ERK5 pathways by phosphorylating and activating MAP2K5 and MAP2K7. It also plays a role in caveolae kiss-and-run dynamics. The protein encoded by this gene is a member of serine/threonine protein kinase family. This kinase preferentially activates other kinases involved in the MAP kinase signaling pathway. This kinase has been shown to directly phosphorylate and activate I κ B kinases, and thus plays a role in NF- κ B signaling pathway. This kinase has also been found to bind and activate protein kinase C-related kinase 2, which suggests its involvement in a regulated signaling process. Publication Note: This RefSeq record includes a subset of the publications that are available for this gene. Please see the Entrez Gene record to access additional publications. PRIMARYREFSEQ_SPAN PRIMARY_IDENTIFIER PRIMARY_SPAN COMP 1-18 AF111105.1 37-54 19-79 AI760702.1 474-534 80-371 AF111105.1 116-407 372-2650 AB208963.1 313-2591 2651-3557 AK075004.1 2050-2956 3558-3571 BQ423724.1 71-84 3572-3577 W07290.1 11-16 3578-4302 AK074577.1 1-725 4303-4421 BM470563.1 21-139 4422-4424 AK074577.1 845-847 4425-4941 BM470563.1 142-658

Synonyms:

MEKK2; MEKK2B

Note:

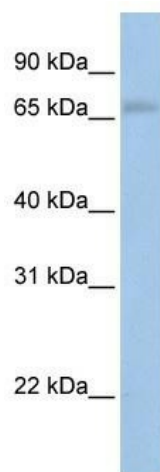
Dog: 100%; Pig: 100%; Human: 100%; Bovine: 100%; Zebrafish: 100%; Rat: 93%; Rabbit: 93%; Guinea pig: 92%; Mouse: 86%; Horse: 80%

Protein Families:

Druggable Genome, Protein Kinase

Protein Pathways:

Gap junction, GnRH signaling pathway, MAPK signaling pathway

Product images:

WB Suggested Anti-MAP3K2 Antibody Titration: 0.2-1 ug/ml; Positive Control: MCF7 cell lysate; MAP3K2 is supported by BioGPS gene expression data to be expressed in MCF7