

Product datasheet for **TA331027**

Methyltransferase like protein 10 (METTL10) Rabbit Polyclonal Antibody

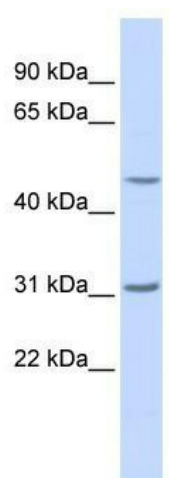
Product data:

Product Type:	Primary Antibodies
Applications:	WB
Recommended Dilution:	WB
Reactivity:	Human
Host:	Rabbit
Isotype:	IgG
Clonality:	Polyclonal
Immunogen:	The immunogen for anti-METTL10 antibody: synthetic peptide directed towards the N terminal of human LOC399818. Synthetic peptide located within the following region: SSGADGGGGAAVAARSDKSGPGEDGFVPSALGTREHWDVYERELQTFRE
Formulation:	Liquid. Purified antibody supplied in 1x PBS buffer with 0.09% (w/v) sodium azide and 2% sucrose. <i>Note that this product is shipped as lyophilized powder to China customers.</i>
Purification:	Affinity Purified
Conjugation:	Unconjugated
Storage:	Store at -20°C as received.
Stability:	Stable for 12 months from date of receipt.
Predicted Protein Size:	32 kDa
Gene Name:	methyltransferase like 10
Database Link:	NP_997719 Entrez Gene 399818 Human Q5JPI9
Background:	LOC399818 belongs to the methyltransferase superfamily
Synonyms:	C10orf138
Note:	Human: 100%
Protein Families:	Druggable Genome



[View online »](#)

Product images:



WB Suggested Anti-METTL10 Antibody Titration:
0.2-1 ug/ml; ELISA Titer: 1:2500; Positive Control:
Human brain