

Product datasheet for **TA331022**

FLAD1 Rabbit Polyclonal Antibody

Product data:

Product Type:	Primary Antibodies
Applications:	WB
Recommended Dilution:	WB
Reactivity:	Human
Host:	Rabbit
Isotype:	IgG
Clonality:	Polyclonal
Immunogen:	The immunogen for anti-FLAD1 antibody: synthetic peptide directed towards the N terminal of human FLAD1. Synthetic peptide located within the following region: PGRSVTAGIIIVGDEILKGGHTQDTNTFFLCRTLRLSLGVQVCRVSVVPDEV
Formulation:	Liquid. Purified antibody supplied in 1x PBS buffer with 0.09% (w/v) sodium azide and 2% sucrose. <i>Note that this product is shipped as lyophilized powder to China customers.</i>
Purification:	Affinity Purified
Conjugation:	Unconjugated
Storage:	Store at -20°C as received.
Stability:	Stable for 12 months from date of receipt.
Predicted Protein Size:	65 kDa
Gene Name:	flavin adenine dinucleotide synthetase 1
Database Link:	NP_079483 Entrez Gene 80308 Human Q8NFF5
Background:	FLAD1 catalyzes the adenylation of flavin mononucleotide (FMN) to form flavin adenine dinucleotide (FAD) coenzyme. This gene encodes the enzyme that catalyzes adenylation of flavin mononucleotide (FMN) to form flavin adenine dinucleotide (FAD) coenzyme. Alternatively spliced transcript variants encoding distinct isoforms have been observed.
Synonyms:	FAD1; FADS; LSMFLAD; PP591

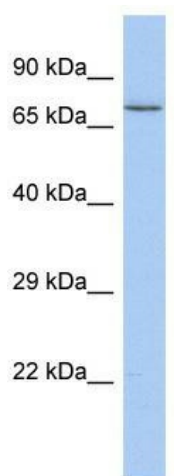


[View online »](#)

Note: Dog: 100%; Pig: 100%; Rat: 100%; Horse: 100%; Human: 100%; Mouse: 100%; Bovine: 100%; Rabbit: 100%; Zebrafish: 92%

Protein Pathways: Metabolic pathways, Riboflavin metabolism

Product images:



WB Suggested Anti-FLAD1 Antibody Titration: 0.2-1 ug/ml; ELISA Titer: 1:1562500; Positive Control: PANC1 cell lysate FLAD1 is supported by BioGPS gene expression data to be expressed in PANC1