

## Product datasheet for **TA331019**

### **GALNTL4 (GALNT18) Rabbit Polyclonal Antibody**

#### **Product data:**

|                                |  |
|--------------------------------|--|
| <b>Product Type:</b>           | Primary Antibodies   |
| <b>Applications:</b>           | WB   |
| <b>Recommended Dilution:</b>   | WB   |
| <b>Reactivity:</b>             | Human  |
| <b>Host:</b>                   | Rabbit   |
| <b>Isotype:</b>                | IgG  |
| <b>Clonality:</b>              | Polyclonal   |
| <b>Immunogen:</b>              | The immunogen for anti-GALNTL4 antibody: synthetic peptide directed towards the middle region of human GALNTL4. Synthetic peptide located within the following region:<br>IIAYGVLQNSLKTDLCLDQGPDTENVPIMYICHGMTPQNVYYTSSQQIHV |
| <b>Formulation:</b>            | Liquid. Purified antibody supplied in 1x PBS buffer with 0.09% (w/v) sodium azide and 2% sucrose.<br><i>Note that this product is shipped as lyophilized powder to China customers.</i>                                      |
| <b>Purification:</b>           | Affinity Purified  |
| <b>Conjugation:</b>            | Unconjugated   |
| <b>Storage:</b>                | Store at -20°C as received.  |
| <b>Stability:</b>              | Stable for 12 months from date of receipt.   |
| <b>Predicted Protein Size:</b> | 69 kDa   |
| <b>Gene Name:</b>              | polypeptide N-acetylgalactosaminyltransferase 18   |
| <b>Database Link:</b>          | <a href="#">NP_940918</a><br><a href="#">Entrez Gene 374378 Human</a><br><a href="#">Q6P9A2</a>  |
| <b>Background:</b>             | GALNTL4 may catalyze the initial reaction in O-linked oligosaccharide biosynthesis, the transfer of an N-acetyl-D-galactosamine residue to a serine or threonine residue on the protein receptor.                            |
| <b>Synonyms:</b>               | GalNAc-T15; GalNAc-T18; GALNACT18; GALNT15; GALNTL4  |
| <b>Note:</b>                   | Dog: 100%; Pig: 100%; Rat: 100%; Human: 100%; Mouse: 100%; Bovine: 100%; Rabbit: 100%; Guinea pig: 100%; Horse: 93%; Zebrafish: 92%  |

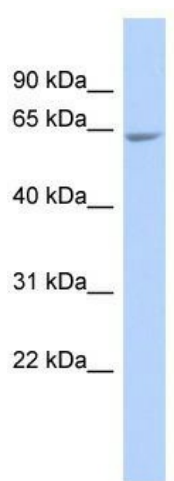


[View online »](#)

Protein Families: Transmembrane

Protein Pathways: Metabolic pathways, O-Glycan biosynthesis

### Product images:



WB Suggested Anti-GALNTL4 Antibody Titration:  
0.2-1 ug/ml; ELISA Titer: 1:62500; Positive Control:  
721\_B cell lysate