

## Product datasheet for **TA331014**

### KAT8 Rabbit Polyclonal Antibody

#### Product data:

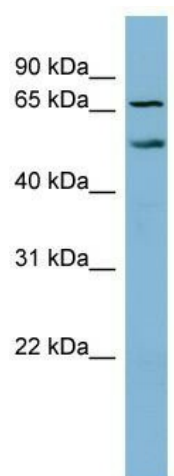
Product Type:	Primary Antibodies
Applications:	WB
Recommended Dilution:	WB
Reactivity:	Human
Host:	Rabbit
Isotype:	IgG
Clonality:	Polyclonal
Immunogen:	The immunogen for anti-MYST1 antibody: synthetic peptide directed towards the N terminal of human MYST1. Synthetic peptide located within the following region: MAAQGAAAVAAGTSGVAGEGEPGPGENAAAEGTAPSPGRVSPPTPARGE
Formulation:	Liquid. Purified antibody supplied in 1x PBS buffer with 0.09% (w/v) sodium azide and 2% sucrose. <i>Note that this product is shipped as lyophilized powder to China customers.</i>
Purification:	Affinity Purified
Conjugation:	Unconjugated
Storage:	Store at -20°C as received.
Stability:	Stable for 12 months from date of receipt.
Predicted Protein Size:	52 kDa
Gene Name:	lysine acetyltransferase 8
Database Link:	<a href="#">NP_115564</a> <a href="#">Entrez Gene 84148 Human</a> <a href="#">Q9H7Z6</a>
Background:	The MYST family of histone acetyltransferases, which includes MYST1, is named for the founding members MOZ (MYST3; MIM 601408), yeast YBF2 and SAS2, and TIP60 (HTATIP; MIM 601409). All members of this family contain a MYST region of about 240 amino acids
Synonyms:	hMOF; MOF; MYST1; ZC2HC8
Note:	Human: 100%; Pig: 93%; Mouse: 93%; Bovine: 93%; Guinea pig: 93%; Dog: 86%; Horse: 86%; Rabbit: 86%; Rat: 79%



[View online »](#)

Protein Families: Transcription Factors

### Product images:



WB Suggested Anti-MYST1 Antibody Titration: 0.2-1 ug/ml; ELISA Titer: 1:62500; Positive Control: THP-1 cell lysate