

Product datasheet for TA331011

PIGW Rabbit Polyclonal Antibody

Product data:

Product Type:	Primary Antibodies
Applications:	WB
Recommended Dilution:	WB
Reactivity:	Human
Host:	Rabbit
Isotype:	IgG
Clonality:	Polyclonal
Immunogen:	The immunogen for anti-PIGW antibody: synthetic peptide directed towards the middle region of human PIGW. Synthetic peptide located within the following region: IALGITVLYQLALDFTSLKRLILYGTGSGTRVGLLNANREGIISTLGYV
Formulation:	Liquid. Purified antibody supplied in 1x PBS buffer with 0.09% (w/v) sodium azide and 2% sucrose. <i>Note that this product is shipped as lyophilized powder to China customers.</i>
Conjugation:	Unconjugated
Storage:	Store at -20°C as received.
Stability:	Stable for 12 months from date of receipt.
Predicted Protein Size:	57 kDa
Gene Name:	phosphatidylinositol glycan anchor biosynthesis class W
Database Link:	NP_848612 Entrez Gene 284098 Human Q7Z7B1
Background:	Glycosylphosphatidylinositol (GPI) is a complex glycolipid that anchors many proteins to the cell surface. PIGW acts in the third step of GPI biosynthesis and acylates the inositol ring of phosphatidylinositol. Glycosylphosphatidylinositol (GPI) is a complex glycolipid that anchors many proteins to the cell surface. PIGW acts in the third step of GPI biosynthesis and acylates the inositol ring of phosphatidylinositol (Murakami et al., 2003 [PubMed 14517336]). [supplied by OMIM]. PRIMARYREFSEQ_SPAN PRIMARY_IDENTIFIER PRIMARY_SPAN COMP 1-430 AK094752.1 1-430 431-1570 AB097818.1 376-1515 1571-2255 AK094752.1 1571-2255



[View online »](#)

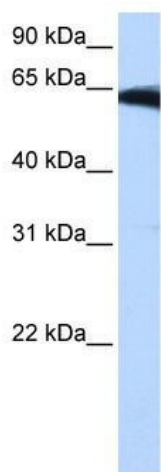
Synonyms: Gwt1; HPMRS5

Note: Pig: 100%; Horse: 100%; Human: 100%; Bovine: 100%; Guinea pig: 100%; Dog: 93%; Rat: 93%; Mouse: 93%

Protein Families: Transmembrane

Protein Pathways: Glycosylphosphatidylinositol(GPI)-anchor biosynthesis, Metabolic pathways

Product images:



WB Suggested Anti-PIGW Antibody Titration: 0.2-1 ug/ml; Positive Control: NTERA2 cell lysate