

## Product datasheet for **TA331010**

### Pigw Rabbit Polyclonal Antibody

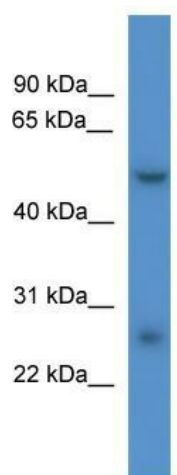
#### Product data:

Product Type:	Primary Antibodies
Applications:	WB
Recommended Dilution:	WB
Reactivity:	Rat
Host:	Rabbit
Isotype:	IgG
Clonality:	Polyclonal
Immunogen:	The immunogen for anti-Pigw antibody: synthetic peptide corresponding to a region of Rat. Synthetic peptide located within the following region: SIGYQEHSTEYGVHWNFFFTIIVVKLITSLLLIIFPLNKSWIVAISITVL
Formulation:	Liquid. Purified antibody supplied in 1x PBS buffer with 0.09% (w/v) sodium azide and 2% sucrose. <i>Note that this product is shipped as lyophilized powder to China customers.</i>
Conjugation:	Unconjugated
Storage:	Store at -20°C as received.
Stability:	Stable for 12 months from date of receipt.
Predicted Protein Size:	55 kDa
Gene Name:	phosphatidylinositol glycan anchor biosynthesis, class W
Database Link:	<a href="#">NP_919443</a> <a href="#">Entrez Gene 378774 Rat</a> <a href="#">Q7TSN4</a>
Background:	Pigw is a probable acetyltransferase, which acetylates the inositol ring of phosphatidylinositol during biosynthesis of GPI-anchor. Acetylation during GPI-anchor biosynthesis is not essential for the subsequent mannosylation and is usually removed soon after the attachment of GPIs to proteins
Synonyms:	FLJ37433; Gwt1; PIG-W
Note:	Dog: 100%; Pig: 100%; Human: 100%; Rat: 93%; Horse: 93%; Guinea pig: 93%; Yeast: 91%; Mouse: 86%; Bovine: 86%; Zebrafish: 83%



[View online »](#)

## Product images:



WB Suggested Anti-Pigw Antibody Titration: 0.2-1 ug/ml; ELISA Titer: 1:1562500; Positive Control: Rat Liver