

Product datasheet for **TA331009**

GGT7 Rabbit Polyclonal Antibody

Product data:

Product Type:	Primary Antibodies
Applications:	WB
Recommended Dilution:	WB
Reactivity:	Human
Host:	Rabbit
Isotype:	IgG
Clonality:	Polyclonal
Immunogen:	The immunogen for anti-GGTL3 antibody: synthetic peptide directed towards the C terminal of human GGTL3. Synthetic peptide located within the following region: ILLNSQMLDFSWPNRTANHSAPLENSVQPGKRPLSFLPTVVRPAEGLC
Formulation:	Liquid. Purified antibody supplied in 1x PBS buffer with 0.09% (w/v) sodium azide and 2% sucrose. <i>Note that this product is shipped as lyophilized powder to China customers.</i>
Purification:	Affinity Purified
Conjugation:	Unconjugated
Storage:	Store at -20°C as received.
Stability:	Stable for 12 months from date of receipt.
Predicted Protein Size:	70 kDa
Gene Name:	gamma-glutamyltransferase 7
Database Link:	NP_821158 Entrez Gene 2686 Human Q9UJ14



[View online »](#)

Background:

GGTL3 is an enzymes involved in both the metabolism of glutathione and in the transpeptidation of amino acids. Changes in the activity of gamma-glutamyltransferase may signal preneoplastic or toxic conditions in the liver or kidney. GGTL3 consists of a heavy and a light chain, and it can interact with CT120, a plasma membrane-associated protein that is possibly involved in lung carcinogenesis. This gene is a member of a gene family that encodes enzymes involved in both the metabolism of glutathione and in the transpeptidation of amino acids. Changes in the activity of gamma-glutamyltransferase may signal preneoplastic or toxic conditions in the liver or kidney. The protein encoded by this gene consists of a heavy and a light chain, and it can interact with CT120, a plasma membrane-associated protein that is possibly involved in lung carcinogenesis. Sequence Note: This RefSeq record was created from transcript and genomic sequence data to make the sequence consistent with the reference genome assembly. The genomic coordinates used for the transcript record were based on transcript alignments.

Synonyms:

D20S101; dJ18C9.2; GGT4; GGTL3; GGTL5

Note:

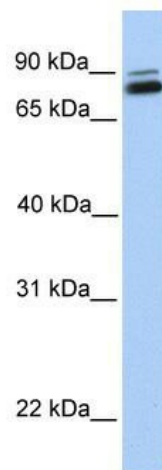
Dog: 100%; Rat: 100%; Horse: 100%; Human: 100%; Mouse: 100%; Rabbit: 100%; Pig: 93%; Bovine: 93%; Guinea pig: 86%

Protein Families:

Protease, Transmembrane

Protein Pathways:

Arachidonic acid metabolism, Cyanoamino acid metabolism, Glutathione metabolism, Metabolic pathways, Selenoamino acid metabolism, Taurine and hypotaurine metabolism

Product images:

WB Suggested Anti-GGTL3 Antibody Titration: 0.2-1 ug/ml; Positive Control: Human brain