

Product datasheet for **TA331008**

SULT1A1 Rabbit Polyclonal Antibody

Product data:

| | |
|-------------------------|--|
| Product Type: | Primary Antibodies |
| Applications: | IHC, WB |
| Recommended Dilution: | WB |
| Reactivity: | Human |
| Host: | Rabbit |
| Isotype: | IgG |
| Clonality: | Polyclonal |
| Immunogen: | The immunogen for anti-SULT1A1 antibody: synthetic peptide directed towards the N terminal of human SULT1A1. Synthetic peptide located within the following region: ELIQDTSRPPLEYVKGVPLIKYFAEALGPLQSFQARPDDLLISTYPKSGT |
| Formulation: | Liquid. Purified antibody supplied in 1x PBS buffer with 0.09% (w/v) sodium azide and 2% sucrose. <i>Note that this product is shipped as lyophilized powder to China customers.</i> |
| Purification: | Affinity Purified |
| Conjugation: | Unconjugated |
| Storage: | Store at -20°C as received. |
| Stability: | Stable for 12 months from date of receipt. |
| Predicted Protein Size: | 34 kDa |
| Gene Name: | sulfotransferase family 1A member 1 |
| Database Link: | NP_001046 Entrez Gene 6817 Human P50225 |



[View online »](#)

Background:

Sulfotransferase enzymes catalyze the sulfate conjugation of many hormones, neurotransmitters, drugs, and xenobiotic compounds. These cytosolic enzymes are different in their tissue distributions and substrate specificities. The gene structure (number and length of exons) is similar among family members. SULT1A1 is one of two phenol sulfotransferases with thermostable enzyme activity. Sulfotransferase enzymes catalyze the sulfate conjugation of many hormones, neurotransmitters, drugs, and xenobiotic compounds. These cytosolic enzymes are different in their tissue distributions and substrate specificities. The gene structure (number and length of exons) is similar among family members. This gene encodes one of two phenol sulfotransferases with thermostable enzyme activity. Multiple alternatively spliced variants that encode two isoforms have been identified for this gene.

Synonyms:

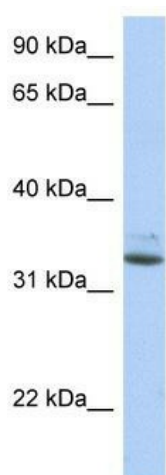
HAST1; HAST2; P-PST; PST; ST1A1; ST1A3; STP; STP1; TSPST1

Note:

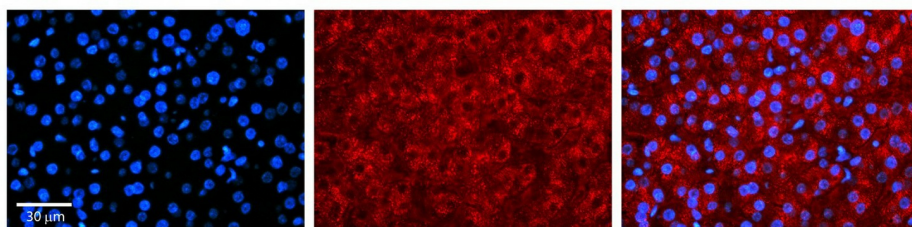
Horse: 100%; Human: 100%; Bovine: 100%; Rabbit: 100%; Dog: 93%; Pig: 93%; Rat: 93%; Mouse: 86%; Zebrafish: 86%; Guinea pig: 86%

Protein Pathways:

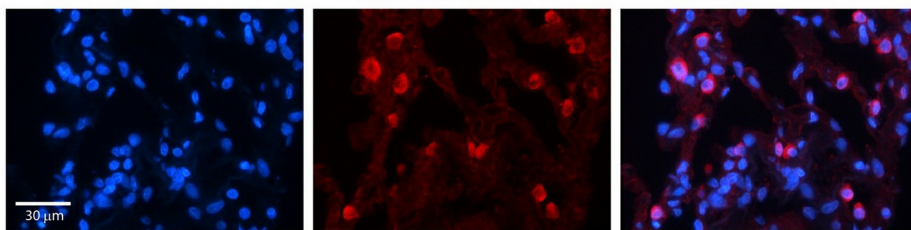
Sulfur metabolism

Product images:


WB Suggested Anti-SULT1A1 Antibody Titration: 0.2-1 ug/ml; Positive Control: Human Liver



SULT1A1 antibody - N-terminal region; Formalin Fixed Paraffin Embedded Tissue: Human Liver Tissue; Observed Staining: Cytoplasm in hepatocytes; Primary Antibody Concentration: 1:100



SULT1A1 antibody - N-terminal region; Formalin Fixed Paraffin Embedded Tissue: Human Lung Tissue; Observed Staining: Cytoplasm of pneumocytes; Primary Antibody Concentration: 1:100