

## Product datasheet for **TA331006**

### SULT1C2 Rabbit Polyclonal Antibody

#### Product data:

Product Type:	Primary Antibodies
Applications:	WB
Recommended Dilution:	WB
Reactivity:	Human
Host:	Rabbit
Isotype:	IgG
Clonality:	Polyclonal
Immunogen:	The immunogen for anti-SULT1C2 antibody: synthetic peptide directed towards the C terminal of human SULT1C2. Synthetic peptide located within the following region: LDQSISSFMRKGTVDWKNHFTVAQNERFDEIYRRKMEGTSINFCMEL
Formulation:	Liquid. Purified antibody supplied in 1x PBS buffer with 0.09% (w/v) sodium azide and 2% sucrose. <i>Note that this product is shipped as lyophilized powder to China customers.</i>
Purification:	Affinity Purified
Conjugation:	Unconjugated
Storage:	Store at -20°C as received.
Stability:	Stable for 12 months from date of receipt.
Predicted Protein Size:	35 kDa
Gene Name:	sulfotransferase family 1C member 2
Database Link:	<a href="#">NP_001047</a> <a href="#">Entrez Gene 6819 Human</a> <a href="#">O00338</a>



[View online »](#)

**Background:**

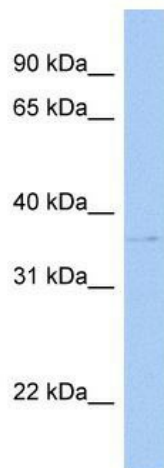
Sulfotransferase enzymes catalyze the sulfate conjugation of many hormones, neurotransmitters, drugs, and xenobiotic compounds. These cytosolic enzymes are different in their tissue distributions and substrate specificities. The gene structure (number and length of exons) is similar among family members. SULT1C2 is a protein that belongs to the SULT1 subfamily, responsible for transferring a sulfo moiety from PAPS to phenol-containing compounds. Sulfotransferase enzymes catalyze the sulfate conjugation of many hormones, neurotransmitters, drugs, and xenobiotic compounds. These cytosolic enzymes are different in their tissue distributions and substrate specificities. The gene structure (number and length of exons) is similar among family members. This gene encodes a protein that belongs to the SULT1 subfamily, responsible for transferring a sulfo moiety from PAPS to phenol-containing compounds. Two alternatively spliced transcript variants encoding different isoforms have been described for this gene.

**Synonyms:**

humSULTC2; ST1C1; ST1C2; SULT1C1

**Note:**

Pig: 100%; Rat: 100%; Horse: 100%; Human: 100%; Mouse: 100%; Bovine: 100%; Dog: 93%; Zebrafish: 93%; Guinea pig: 92%; Rabbit: 86%

**Product images:**

WB Suggested Anti-SULT1C2 Antibody Titration:  
0.2-1 ug/ml; Positive Control: Hela cell lysate