

## Product datasheet for **TA331005**

### TMTC1 Rabbit Polyclonal Antibody

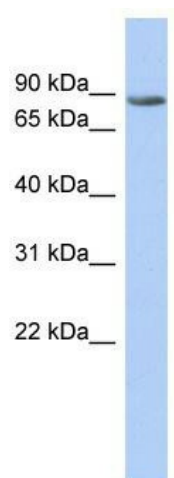
#### Product data:

Product Type:	Primary Antibodies
Applications:	WB
Recommended Dilution:	WB
Reactivity:	Human
Host:	Rabbit
Isotype:	IgG
Clonality:	Polyclonal
Immunogen:	The immunogen for anti-TMTC1 antibody: synthetic peptide directed towards the middle region of human TMTC1. Synthetic peptide located within the following region: LFFTKGNQLREQNLLDKAFESYRVAVQLNPDQAQAWMNMGGIQUIKGYV
Formulation:	Liquid. Purified antibody supplied in 1x PBS buffer with 0.09% (w/v) sodium azide and 2% sucrose.
Purification:	Affinity Purified
Conjugation:	Unconjugated
Storage:	Store at -20°C as received.
Stability:	Stable for 12 months from date of receipt.
Predicted Protein Size:	87 kDa
Gene Name:	transmembrane and tetratricopeptide repeat containing 1
Database Link:	<a href="#">NP_787057</a> <a href="#">Entrez Gene 83857 Human</a> <a href="#">Q8IUR5</a>
Background:	TMTC1 is a multi-pass membrane protein. It belongs to the TMTC family and contains 10 TPR repeats. The exact function of TMTC1 remains unknown.
Synonyms:	ARG99; OLF; TMTC1A
Note:	Dog: 100%; Pig: 100%; Rat: 100%; Horse: 100%; Human: 100%; Mouse: 100%; Bovine: 100%; Rabbit: 100%; Guinea pig: 100%
Protein Families:	Transmembrane



[View online »](#)

## Product images:



WB Suggested Anti-TMTC1 Antibody Titration:  
0.2-1 ug/ml; ELISA Titer: 1:312500; Positive  
Control: Human Spleen