

## Product datasheet for **TA331004**

### **TMTC1 Rabbit Polyclonal Antibody**

#### **Product data:**

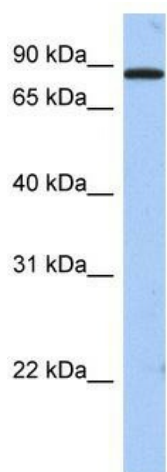
<b>Product Type:</b>	Primary Antibodies
<b>Applications:</b>	WB
<b>Recommended Dilution:</b>	WB
<b>Reactivity:</b>	Human
<b>Host:</b>	Rabbit
<b>Isotype:</b>	IgG
<b>Clonality:</b>	Polyclonal
<b>Immunogen:</b>	The immunogen for anti-TMTC1 antibody: synthetic peptide directed towards the middle region of human TMTC1. Synthetic peptide located within the following region: GPEFADAYSSLASLLAEQERFKEAEIYQTGIKNCPDSSDLHNNYGVFLV
<b>Formulation:</b>	Liquid. Purified antibody supplied in 1x PBS buffer with 0.09% (w/v) sodium azide and 2% sucrose. <i>Note that this product is shipped as lyophilized powder to China customers.</i>
<b>Purification:</b>	Affinity Purified
<b>Conjugation:</b>	Unconjugated
<b>Storage:</b>	Store at -20°C as received.
<b>Stability:</b>	Stable for 12 months from date of receipt.
<b>Predicted Protein Size:</b>	87 kDa
<b>Gene Name:</b>	transmembrane and tetratricopeptide repeat containing 1
<b>Database Link:</b>	<a href="#">NP_787057</a> <a href="#">Entrez Gene 83857 Human</a> <a href="#">Q8IUR5</a>
<b>Background:</b>	TMTC1 is a multi-pass membrane protein. It belongs to the TMTC family and contains 10 TPR repeats. The exact function of TMTC1 remains unknown.
<b>Synonyms:</b>	ARG99; OLF; TMTC1A
<b>Note:</b>	Dog: 100%; Rat: 100%; Human: 100%; Bovine: 100%; Pig: 93%; Horse: 93%; Mouse: 93%; Rabbit: 93%; Guinea pig: 93%; Yeast: 91%



[View online »](#)

Protein Families: Transmembrane

### Product images:



WB Suggested Anti-TMTC1 Antibody Titration:  
0.2-1 ug/ml; Positive Control: Human heart