

## Product datasheet for **TA331003**

### CHSY3 Rabbit Polyclonal Antibody

#### Product data:

Product Type:	Primary Antibodies
Applications:	WB
Recommended Dilution:	WB
Reactivity:	Human
Host:	Rabbit
Isotype:	IgG
Clonality:	Polyclonal
Immunogen:	The immunogen for anti-CHSY-2 antibody: synthetic peptide directed towards the N terminal of human CHSY-2. Synthetic peptide located within the following region: PPLQQRRRGREPEGATGLPGAPAAEGEPEEEDGGAAGQRRDGRPGSSHNG
Formulation:	Liquid. Purified antibody supplied in 1x PBS buffer with 0.09% (w/v) sodium azide and 2% sucrose. <i>Note that this product is shipped as lyophilized powder to China customers.</i>
Purification:	Affinity Purified
Conjugation:	Unconjugated
Storage:	Store at -20°C as received.
Stability:	Stable for 12 months from date of receipt.
Predicted Protein Size:	100 kDa
Gene Name:	chondroitin sulfate synthase 3
Database Link:	<a href="#">NP_787052</a> <a href="#">Entrez Gene 337876 Human</a> <a href="#">Q70JA7</a>
Background:	CHSY-2 has both beta-1,3-glucuronic acid and beta-1,4-N-acetylgalactosamine transferase activity. CHSY-2 transfers glucuronic acid (GlcUA) from UDP-GlcUA and N-acetylgalactosamine (GalNAc) from UDP-GalNAc to the non-reducing end of the elongating chondroitin polymer. Specific activity of CHSY-2 is much reduced compared to CHSY1.CSS3 is a glycosyltransferase that has both glucuronyltransferase and N-acetylgalactosaminyltransferase activities (Yada et al., 2003 [PubMed 12907687]). [supplied by OMIM]



[View online »](#)

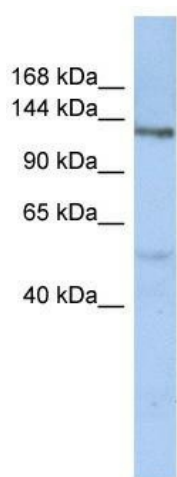
**Synonyms:** CHSY2; CSS3

**Note:** Dog: 100%; Human: 100%; Bovine: 100%; Rabbit: 100%; Pig: 86%; Guinea pig: 86%; Rat: 79%;  
Mouse: 79%

**Protein Families:** Transmembrane

**Protein Pathways:** Chondroitin sulfate biosynthesis, Metabolic pathways

**Product images:**



WB Suggested Anti-CHSY-2 Antibody Titration:  
0.2-1 ug/ml; ELISA Titer: 1:312500; Positive  
Control: OVCAR-3 cell lysate