

Product datasheet for **TA330998**

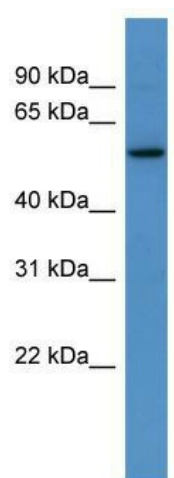
Tent2 Rabbit Polyclonal Antibody

Product data:

Product Type:	Primary Antibodies
Applications:	WB
Recommended Dilution:	WB
Reactivity:	Rat
Host:	Rabbit
Isotype:	IgG
Clonality:	Polyclonal
Immunogen:	The immunogen for anti-Papd4 antibody: synthetic peptide corresponding to a region of Rat. Synthetic peptide located within the following region: YICVEEFPDGTNTARAVHEKQKFDMIKDQFLKSWQRLKNKRDLNSVLPLR
Formulation:	Liquid. Purified antibody supplied in 1x PBS buffer with 0.09% (w/v) sodium azide and 2% sucrose.
Purification:	Affinity Purified
Conjugation:	Unconjugated
Storage:	Store at -20°C as received.
Stability:	Stable for 12 months from date of receipt.
Predicted Protein Size:	56 kDa
Gene Name:	PAP associated domain containing 4
Database Link:	NP_001008373 Entrez Gene 361878 Rat Q5U315
Background:	Papd4 is a cytoplasmic poly(A) RNA polymerase that adds successive AMP monomers to the 3'-end of specific RNAs, forming a poly(A) tail. In contrast to the canonical nuclear poly(A) RNA polymerase, it only adds poly(A) to selected cytoplasmic mRNAs. Papd4 does not play a role in replication-dependent histone mRNA degradation.
Synonyms:	FLJ38499; GLD2; hGLD-2
Note:	Dog: 100%; Pig: 100%; Rat: 100%; Horse: 100%; Human: 100%; Mouse: 100%; Bovine: 100%; Rabbit: 100%; Guinea pig: 100%; Zebrafish: 83%



[View online »](#)

Product images:

WB Suggested Anti-Papd4 Antibody Titration: 0.2-1 ug/ml; ELISA Titer: 1:12500; Positive Control: Rat Kidney