

## Product datasheet for **TA330996**

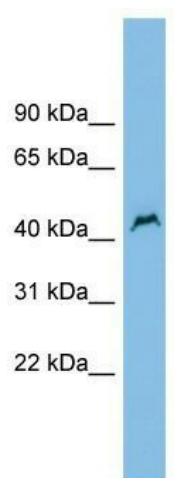
### PNPLA1 Rabbit Polyclonal Antibody

#### Product data:

Product Type:	Primary Antibodies
Applications:	WB
Recommended Dilution:	WB
Reactivity:	Human
Host:	Rabbit
Isotype:	IgG
Clonality:	Polyclonal
Immunogen:	The immunogen for anti-PNPLA1 antibody: synthetic peptide directed towards the middle region of human PNPLA1. Synthetic peptide located within the following region: QAPTSHRPSLGPSTVGAPQTLPRSSLSAFPAQPPVEELGQEQPQAVALLV
Formulation:	Liquid. Purified antibody supplied in 1x PBS buffer with 0.09% (w/v) sodium azide and 2% sucrose. <i>Note that this product is shipped as lyophilized powder to China customers.</i>
Purification:	Affinity Purified
Conjugation:	Unconjugated
Storage:	Store at -20°C as received.
Stability:	Stable for 12 months from date of receipt.
Predicted Protein Size:	48 kDa
Gene Name:	patatin like phospholipase domain containing 1
Database Link:	<a href="#">NP_775947</a> <a href="#">Entrez Gene 285848 Human</a> <a href="#">Q8N8W4</a>
Background:	Human patatin-like phospholipases, such as PNPLA1, have been implicated in regulation of adipocyte differentiation and have been induced by metabolic stimuli (Wilson et al., 2006 [PubMed 16799181]).
Synonyms:	ARCI10; dJ50J22.1
Note:	Human: 93%



[View online »](#)

**Product images:**

WB Suggested Anti-PNPLA1 Antibody Titration:  
0.2-1 ug/ml; ELISA Titer: 1:312500; Positive  
Control: COLO205 cell lysate