

## Product datasheet for **TA330993**

### Upp2 Rabbit Polyclonal Antibody

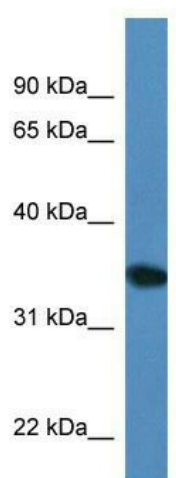
#### Product data:

Product Type:	Primary Antibodies
Applications:	WB
Recommended Dilution:	WB
Reactivity:	Mouse
Host:	Rabbit
Isotype:	IgG
Clonality:	Polyclonal
Immunogen:	The immunogen for anti-Upp2 antibody: synthetic peptide corresponding to a region of Mouse. Synthetic peptide located within the following region: SREIPNVPTLIGHTMCTYDFYEGQGRLDGALCSFSREKKLDYLKRAYRAG
Formulation:	Liquid. Purified antibody supplied in 1x PBS buffer with 0.09% (w/v) sodium azide and 2% sucrose. <i>Note that this product is shipped as lyophilized powder to China customers.</i>
Conjugation:	Unconjugated
Storage:	Store at -20°C as received.
Stability:	Stable for 12 months from date of receipt.
Predicted Protein Size:	36 kDa
Gene Name:	uridine phosphorylase 2
Database Link:	<a href="#">NP_083968</a> <a href="#">Entrez Gene 76654 Mouse</a> <a href="#">Q8CGR7</a>
Background:	Upp2 catalyzes the reversible phosphorylytic cleavage of uridine and deoxyuridine to uracil and ribose- or deoxyribose-1-phosphate. The produced molecules are then utilized as carbon and energy sources or in the rescue of pyrimidine bases for nucleotide synthesis.
Synonyms:	UDRPASE2; UP2; UPASE2
Note:	Rat: 100%; Human: 100%; Mouse: 100%; Rabbit: 100%; Pig: 93%; Goat: 93%; Bovine: 93%; Guinea pig: 93%



[View online »](#)

Product images:



WB Suggested Anti-Upp2 Antibody; Titration: 1.0 ug/ml; Positive Control: Mouse Brain