

Product datasheet for **TA330991**

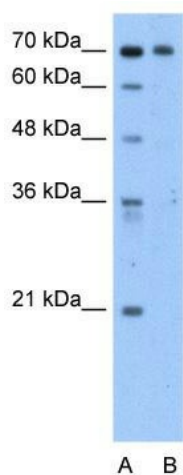
C9orf96 (STKLD1) Rabbit Polyclonal Antibody

Product data:

Product Type:	Primary Antibodies
Applications:	WB
Recommended Dilution:	WB
Reactivity:	Human
Host:	Rabbit
Isotype:	IgG
Clonality:	Polyclonal
Immunogen:	The immunogen for anti-C9orf96 antibody: synthetic peptide directed towards the C terminal of human C9orf96. Synthetic peptide located within the following region: AFKVVVQEEGSGLSLIKETYQLHRDDPEVVENVGMLLVHLASYEEILPE
Formulation:	Liquid. Purified antibody supplied in 1x PBS buffer with 0.09% (w/v) sodium azide and 2% sucrose. <i>Note that this product is shipped as lyophilized powder to China customers.</i>
Purification:	Protein A purified
Conjugation:	Unconjugated
Storage:	Store at -20°C as received.
Stability:	Stable for 12 months from date of receipt.
Predicted Protein Size:	76 kDa
Gene Name:	serine/threonine kinase-like domain containing 1
Database Link:	NP_714921 Entrez Gene 169436 Human Q8NE28
Background:	The function remains unknown.
Synonyms:	C9orf96; SgK071; Sk521
Note:	Human: 100%; Bovine: 100%; Pig: 93%; Horse: 93%; Guinea pig: 93%; Rat: 90%; Dog: 86%
Protein Families:	Protein Kinase



[View online »](#)

Product images:

WB Suggested Anti-C9orf96 Antibody Titration:
2.5ug/ml; Positive Control: HepG2 cell lysate