

Product datasheet for **TA330986**

LYK5 (STRADA) Rabbit Polyclonal Antibody

Product data:

Product Type:	Primary Antibodies
Applications:	WB
Recommended Dilution:	WB
Reactivity:	Human
Host:	Rabbit
Isotype:	IgG
Clonality:	Polyclonal
Immunogen:	The immunogen for anti-LYK5 antibody: synthetic peptide directed towards the N terminal of human LYK5. Synthetic peptide located within the following region: MSFLTNDASSESIASFQKQEVMSFLPEGGCYELLTVIGKGFEDLMTVNL
Formulation:	Liquid. Purified antibody supplied in 1x PBS buffer with 0.09% (w/v) sodium azide and 2% sucrose. <i>Note that this product is shipped as lyophilized powder to China customers.</i>
Purification:	Affinity Purified
Conjugation:	Unconjugated
Storage:	Store at -20°C as received.
Stability:	Stable for 12 months from date of receipt.
Predicted Protein Size:	44 kDa
Gene Name:	STE20-related kinase adaptor alpha
Database Link:	NP_001003787 Entrez Gene 92335 Human Q7RTN6
Background:	LYK5 belongs to the protein kinase superfamily, STE Ser/Thr protein kinase family, STE20 subfamily. It contains 1 protein kinase domain. LYK5 is a pseudokinase which, in complex with CAB39, binds to and activates STK11. It relocates STK11 from the nucleus
Synonyms:	LYK5; NY-BR-96; PMSE; StIk; STRAD
Note:	Human: 100%; Pig: 93%; Rat: 93%; Horse: 93%; Rabbit: 93%; Guinea pig: 93%; Mouse: 92%; Bovine: 92%; Dog: 86%

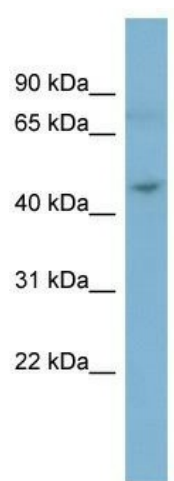


[View online »](#)

Protein Families: Druggable Genome, Protein Kinase

Protein Pathways: mTOR signaling pathway

Product images:



WB Suggested Anti-LYK5 Antibody Titration: 0.2-1 ug/ml; ELISA Titer: 1:500; Positive Control: Human Spleen