

Product datasheet for **TA330982**

NEK3 Rabbit Polyclonal Antibody

Product data:

Product Type:	Primary Antibodies
Applications:	WB
Recommended Dilution:	WB
Reactivity:	Human
Host:	Rabbit
Isotype:	IgG
Clonality:	Polyclonal
Immunogen:	The immunogen for anti-NEK3 antibody: synthetic peptide directed towards the N terminal of human NEK3. Synthetic peptide located within the following region: FTQMCLGVNHIHKKRVLHRDIKSKNIFLTQNGKVKLGDFGSARLLSNPMA
Formulation:	Liquid. Purified antibody supplied in 1x PBS buffer with 0.09% (w/v) sodium azide and 2% sucrose. <i>Note that this product is shipped as lyophilized powder to China customers.</i>
Purification:	Affinity Purified
Conjugation:	Unconjugated
Storage:	Store at -20°C as received.
Stability:	Stable for 12 months from date of receipt.
Predicted Protein Size:	58 kDa
Gene Name:	NIMA related kinase 3
Database Link:	NP_002489 Entrez Gene 4752 Human P51956



[View online »](#)

Background:

NEK3 is a member of the NimA (never in mitosis A) family of serine/threonine protein kinases. It differs from other NimA family members in that it is not cell cycle regulated and is found primarily in the cytoplasm. The kinase is activated by prolactin stimulation, leading to phosphorylation of VAV2 guanine nucleotide exchange factor, paxillin, and activation of the RAC1 GTPase. In *Aspergillus nidulans*, lack of the serine/threonine kinase NimA (never in mitosis A) results in cell cycle arrest in G2, while overexpression causes the premature onset of mitotic events. The protein encoded by this gene is similar in sequence to the *Aspergillus nidulans* protein and may therefore play a role in mitotic regulation. However, the encoded protein differs from other NimA family members in that it is not cell cycle regulated and is found primarily in the cytoplasm. Three transcript variants have been found for this gene, but the full-length nature of only two of them has been characterized.

Synonyms:

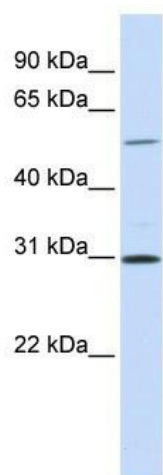
HSPK36

Note:

Pig: 100%; Horse: 100%; Human: 100%; Bovine: 100%; Rabbit: 100%; Guinea pig: 100%; Rat: 93%; Mouse: 93%; Zebrafish: 86%; Yeast: 79%

Protein Families:

Druggable Genome, Protein Kinase

Product images:

WB Suggested Anti-NEK3 Antibody Titration: 0.2-1 ug/ml; ELISA Titer: 1:1562500; Positive Control: Hela cell lysate