

Product datasheet for **TA330980**

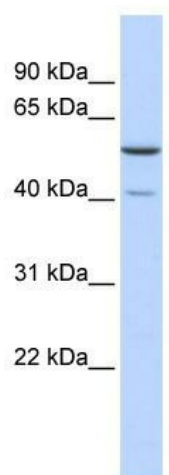
METT5D1 (METTL15) Rabbit Polyclonal Antibody

Product data:

Product Type:	Primary Antibodies
Applications:	WB
Recommended Dilution:	WB
Reactivity:	Human
Host:	Rabbit
Isotype:	IgG
Clonality:	Polyclonal
Immunogen:	The immunogen for anti-METT5D1 antibody: synthetic peptide directed towards the n terminal of human METT5D1. Synthetic peptide located within the following region: MLRYPYFCRMYKECLSCWLESGIPNLGVWPNRIHTTAEKYREYEAREQTD
Formulation:	Liquid. Purified antibody supplied in 1x PBS buffer with 0.09% (w/v) sodium azide and 2% sucrose. <i>Note that this product is shipped as lyophilized powder to China customers.</i>
Purification:	Affinity Purified
Conjugation:	Unconjugated
Storage:	Store at -20°C as received.
Stability:	Stable for 12 months from date of receipt.
Predicted Protein Size:	45 kDa
Gene Name:	methyltransferase like 15
Database Link:	NP_001107000 Entrez Gene 196074 Human A6NJ78
Background:	METT5D1 belongs to the methyltransferase superfamily, mraW family. METT5D1 is a probable S-adenosyl-L-methionine-dependent methyltransferase.
Synonyms:	METT5D1
Note:	Human: 100%



[View online »](#)

Product images:

WB Suggested Anti-METT5D1 Antibody Titration:
0.2-1 ug/ml; ELISA Titer: 1:1562500; Positive
Control: Human brain