

Product datasheet for **TA330979**

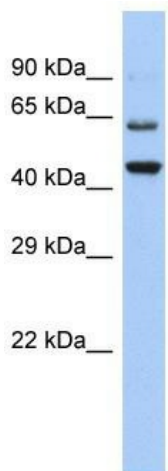
TMTC2 Rabbit Polyclonal Antibody

Product data:

Product Type:	Primary Antibodies
Applications:	WB
Recommended Dilution:	WB
Reactivity:	Human
Host:	Rabbit
Isotype:	IgG
Clonality:	Polyclonal
Immunogen:	The immunogen for Anti-TMTC2 antibody is: synthetic peptide directed towards the C-terminal region of Human TMTC2. Synthetic peptide located within the following region: YLNTGIILMNQGRTEEARRTLKCSEIPDENLKDPHAHKSSVTSCLYNLG
Formulation:	Liquid. Purified antibody supplied in 1x PBS buffer with 0.09% (w/v) sodium azide and 2% sucrose. <i>Note that this product is shipped as lyophilized powder to China customers.</i>
Purification:	Affinity Purified
Conjugation:	Unconjugated
Storage:	Store at -20°C as received.
Stability:	Stable for 12 months from date of receipt.
Predicted Protein Size:	65 kDa
Gene Name:	transmembrane and tetratricopeptide repeat containing 2
Database Link:	NP_689801 Entrez Gene 160335 Human Q8N394
Background:	The function of this protein remains unknown.
Synonyms:	IBDBP1
Note:	Dog: 100%; Pig: 100%; Rat: 100%; Horse: 100%; Human: 100%; Mouse: 100%; Bovine: 100%; Rabbit: 100%; Zebrafish: 100%; Guinea pig: 100%
Protein Families:	Transmembrane



[View online »](#)

Product images:


Host: Rabbit

Target Name: TMTC2

Sample Tissue: Hela Cell Lysate

Antibody Dilution: 1.0µg/ml

Host: Rabbit; Target Name: TMTC2; Sample Tissue: Hela Whole cell lysates; Antibody Dilution: 1.0ug/ml