

Product datasheet for **TA330978**

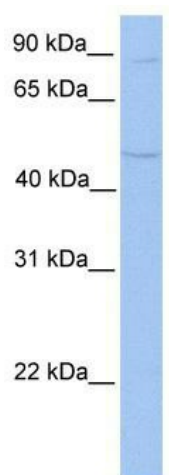
TMTC2 Rabbit Polyclonal Antibody

Product data:

Product Type:	Primary Antibodies
Applications:	WB
Recommended Dilution:	WB
Reactivity:	Human
Host:	Rabbit
Isotype:	IgG
Clonality:	Polyclonal
Immunogen:	The immunogen for anti-TMTC2 antibody: synthetic peptide directed towards the N terminal of human TMTC2. Synthetic peptide located within the following region: SNSDNPAADSDSLLTRTLTFFYLPTKNLWLLCPDTLSFDWSMDAVPLLK
Formulation:	Liquid. Purified antibody supplied in 1x PBS buffer with 0.09% (w/v) sodium azide and 2% sucrose.
Purification:	Affinity Purified
Conjugation:	Unconjugated
Storage:	Store at -20°C as received.
Stability:	Stable for 12 months from date of receipt.
Predicted Protein Size:	94 kDa
Gene Name:	transmembrane and tetratricopeptide repeat containing 2
Database Link:	NP_689801 Entrez Gene 160335 Human Q8N394
Background:	TMTC2 is a multi-pass membrane protein, which contains 10 TPR repeats. It belongs to the TMTC family. The exact function of TMTC2 remains unknown.
Synonyms:	IBDBP1
Note:	Dog: 100%; Pig: 100%; Rat: 100%; Horse: 100%; Human: 100%; Mouse: 100%; Bovine: 100%; Zebrafish: 100%; Guinea pig: 100%; Rabbit: 93%
Protein Families:	Transmembrane



[View online »](#)

Product images:


WB Suggested Anti-TMTC2 Antibody Titration:
0.2-1 ug/ml; Positive Control: MCF7 cell lysate