

## Product datasheet for **TA330976**

### **B3GALNT2 Rabbit Polyclonal Antibody**

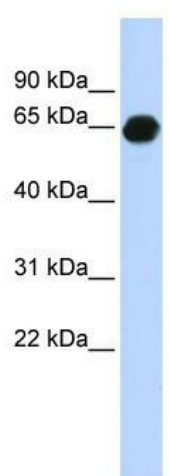
#### **Product data:**

<b>Product Type:</b>	Primary Antibodies
<b>Applications:</b>	WB
<b>Recommended Dilution:</b>	WB
<b>Reactivity:</b>	Human
<b>Host:</b>	Rabbit
<b>Isotype:</b>	IgG
<b>Clonality:</b>	Polyclonal
<b>Immunogen:</b>	The immunogen for anti-B3GALNT2 antibody: synthetic peptide directed towards the middle region of human B3GALNT2. Synthetic peptide located within the following region: PESFEGTIVWESQDLHGLVSRNLHKVTVNDGGGVLRVITAGEGALPHEFL
<b>Formulation:</b>	Liquid. Purified antibody supplied in 1x PBS buffer with 0.09% (w/v) sodium azide and 2% sucrose. <i>Note that this product is shipped as lyophilized powder to China customers.</i>
<b>Purification:</b>	Affinity Purified
<b>Conjugation:</b>	Unconjugated
<b>Storage:</b>	Store at -20°C as received.
<b>Stability:</b>	Stable for 12 months from date of receipt.
<b>Predicted Protein Size:</b>	57 kDa
<b>Gene Name:</b>	beta-1,3-N-acetylgalactosaminyltransferase 2
<b>Database Link:</b>	<a href="#">NP_689703</a> <a href="#">Entrez Gene 148789 Human</a> <a href="#">Q8NCR0</a>
<b>Background:</b>	B3GALNT2 is the beta-1,3-N-acetylgalactosaminyltransferase active in synthesizing a unique carbohydrate structure, GalNAc-beta-1-3GlcNAc, on N- and O-glycans. B3GALNT2 has no galactose nor galactosaminyl transferase activity toward any acceptor substrate.
<b>Synonyms:</b>	B3GalNAc-T2; MDDGA11
<b>Note:</b>	Rat: 100%; Human: 100%; Mouse: 100%; Dog: 93%; Pig: 93%; Horse: 93%; Bovine: 93%; Rabbit: 93%; Guinea pig: 93%



[View online »](#)

## Product images:



WB Suggested Anti-B3GALNT2 Antibody Titration:  
0.2-1 ug/ml; ELISA Titer: 1:312500; Positive  
Control: Human brain