

Product datasheet for **TA330974**

Methyltransferase like 6 (METTL6) Rabbit Polyclonal Antibody

Product data:

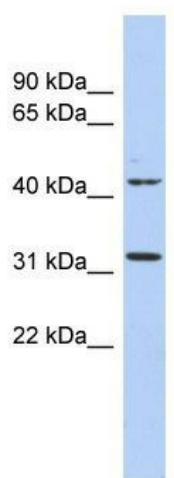
Product Type:	Primary Antibodies
Applications:	WB
Recommended Dilution:	WB
Reactivity:	Human
Host:	Rabbit
Isotype:	IgG
Clonality:	Polyclonal
Immunogen:	The immunogen for anti-METTL6 antibody: synthetic peptide directed towards the N terminal of human METTL6. Synthetic peptide located within the following region: QKLEQEAQKNWDLFYKRNSTNFFKDRHWTTREFEELRSCREFEDQKLTML
Formulation:	Liquid. Purified antibody supplied in 1x PBS buffer with 0.09% (w/v) sodium azide and 2% sucrose. <i>Note that this product is shipped as lyophilized powder to China customers.</i>
Purification:	Affinity Purified
Conjugation:	Unconjugated
Storage:	Store at -20°C as received.
Stability:	Stable for 12 months from date of receipt.
Predicted Protein Size:	33 kDa
Gene Name:	methyltransferase like 6
Database Link:	NP_689609 Entrez Gene 131965 Human Q8TCB7
Background:	METTL6 is a probable methyltransferase.
Synonyms:	MGC24132
Note:	Dog: 100%; Pig: 100%; Rat: 100%; Horse: 100%; Human: 100%; Mouse: 100%; Bovine: 100%; Rabbit: 100%; Zebrafish: 93%; Yeast: 86%
Protein Families:	Druggable Genome



[View online »](#)

Protein Pathways: Androgen and estrogen metabolism, Histidine metabolism, Selenoamino acid metabolism, Tyrosine metabolism

Product images:



WB Suggested Anti-METTL6 Antibody Titration:
0.2-1 ug/ml; ELISA Titer: 1:312500; Positive
Control: DU145 cell lysate