

Product datasheet for **TA330973**

CDYL2 Rabbit Polyclonal Antibody

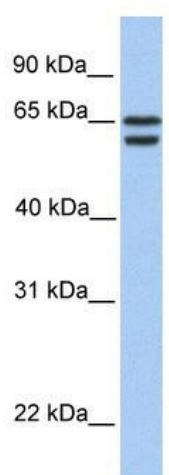
Product data:

Product Type:	Primary Antibodies
Applications:	WB
Recommended Dilution:	WB
Reactivity:	Human
Host:	Rabbit
Isotype:	IgG
Clonality:	Polyclonal
Immunogen:	The immunogen for anti-CDYL2 antibody: synthetic peptide directed towards the N terminal of human CDYL2. Synthetic peptide located within the following region: NPPLAKPKKGYSKGKSSGGDRATKTVSYRTTPSGLQIMPLKKSQNGMENG
Formulation:	Liquid. Purified antibody supplied in 1x PBS buffer with 0.09% (w/v) sodium azide and 2% sucrose.
Purification:	Affinity Purified
Conjugation:	Unconjugated
Storage:	Store at -20°C as received.
Stability:	Stable for 12 months from date of receipt.
Predicted Protein Size:	56 kDa
Gene Name:	chromodomain protein, Y-like 2
Database Link:	NP_689555 Entrez Gene 124359 Human Q8N8U2
Background:	CDYL2 contains 1 chromo domain. The exact function of CDYL2 remains unknown.
Synonyms:	PCCP1
Note:	Pig: 100%; Rat: 100%; Horse: 100%; Human: 100%; Mouse: 100%; Bovine: 100%; Rabbit: 100%; Guinea pig: 100%



[View online »](#)

Product images:



WB Suggested Anti-CDYL2 Antibody Titration: 0.2-1 ug/ml; Positive Control: 721_B cell lysate