

Product datasheet for **TA330968**

LTC4S Rabbit Polyclonal Antibody

Product data:

Product Type:	Primary Antibodies
Applications:	WB
Recommended Dilution:	WB
Reactivity:	Human
Host:	Rabbit
Isotype:	IgG
Clonality:	Polyclonal
Immunogen:	The immunogen for anti-LTC4S antibody: synthetic peptide directed towards the N terminal of human LTC4S. Synthetic peptide located within the following region: MKDEVALLAAVTLLGVLLQAYFSLQVISARRAFRVSPPLTTGPPEFERVY
Formulation:	Liquid. Purified antibody supplied in 1x PBS buffer with 0.09% (w/v) sodium azide and 2% sucrose. <i>Note that this product is shipped as lyophilized powder to China customers.</i>
Conjugation:	Unconjugated
Storage:	Store at -20°C as received.
Stability:	Stable for 12 months from date of receipt.
Predicted Protein Size:	16 kDa
Gene Name:	leukotriene C4 synthase
Database Link:	NP_665874 Entrez Gene 4056 Human Q16873
Background:	The MAPEG (Membrane Associated Proteins in Eicosanoid and Glutathione metabolism) family includes a number of human proteins, several of which are involved the production of leukotrienes. LTC4S is an enzyme that catalyzes the first step in the biosynthesis of cysteinyl leukotrienes, potent biological compounds derived from arachidonic acid. Leukotrienes have been implicated as mediators of anaphylaxis and inflammatory conditions such as human bronchial asthma.
Synonyms:	MGC33147



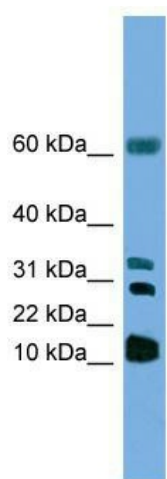
[View online »](#)

Note: Dog: 100%; Pig: 100%; Horse: 100%; Human: 100%; Bovine: 100%; Guinea pig: 100%; Rabbit: 93%; Rat: 92%; Mouse: 92%; Zebrafish: 85%

Protein Families: Druggable Genome, Transmembrane

Protein Pathways: Arachidonic acid metabolism, Metabolic pathways

Product images:



WB Suggested Anti-LTC4S Antibody; Titration: 1.0 ug/ml; Positive Control: HepG2 Whole Cell