

Product datasheet for **TA330965**

MAP4K4 Rabbit Polyclonal Antibody

Product data:

Product Type:	Primary Antibodies
Applications:	IHC, WB
Recommended Dilution:	WB, IHC
Reactivity:	Human
Host:	Rabbit
Isotype:	IgG
Clonality:	Polyclonal
Immunogen:	The immunogen for anti-MAP4K4 antibody: synthetic peptide directed towards the N terminal of human MAP4K4. Synthetic peptide located within the following region: PFIRDQPNERQVRIQLKDHDTRRKRGEKDETEYEYSGSEEEEEVPEQ
Formulation:	Liquid. Purified antibody supplied in 1x PBS buffer with 0.09% (w/v) sodium azide and 2% sucrose. <i>Note that this product is shipped as lyophilized powder to China customers.</i>
Purification:	Affinity Purified
Conjugation:	Unconjugated
Storage:	Store at -20°C as received.
Stability:	Stable for 12 months from date of receipt.
Predicted Protein Size:	133 kDa
Gene Name:	mitogen-activated protein kinase kinase kinase kinase 4
Database Link:	NP_004825 Entrez Gene 9448 Human O95819



[View online »](#)

Background: MAP4K4 is the serine/threonine kinase that may play a role in the response to environmental stress and cytokines such as TNF-alpha. MAP4K4 appears to act upstream of the JUN N-terminal pathway. The protein encoded by this gene is a member of the serine/threonine protein kinase family. This kinase has been shown to specifically activate MAPK8/JNK. The activation of MAPK8 by this kinase is found to be inhibited by the dominant-negative mutants of MAP3K7/TAK1, MAP2K4/MKK4, and MAP2K7/MKK7, which suggests that this kinase may function through the MAP3K7-MAP2K4-MAP2K7 kinase cascade, and mediate the TNF-alpha signaling pathway. Alternatively spliced transcript variants encoding different isoforms have been identified.

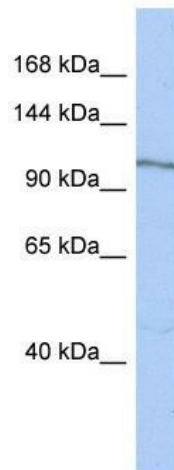
Synonyms: FLH21957; HEL-S-31; HGK; MEKKK4; NIK

Note: Dog: 100%; Pig: 100%; Rat: 100%; Horse: 100%; Human: 100%; Mouse: 100%; Bovine: 100%; Rabbit: 100%; Zebrafish: 100%; Guinea pig: 100%

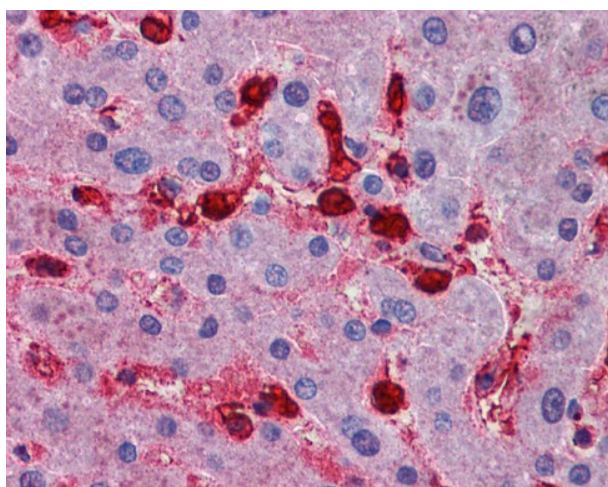
Protein Families: Druggable Genome, Protein Kinase

Protein Pathways: MAPK signaling pathway

Product images:



WB Suggested Anti-MAP4K4 Antibody Titration:
0.2-1 ug/ml; ELISA Titer: 1:1562500; Positive
Control: Human Small Intestine



Liver