

## Product datasheet for **TA330964**

### **C6orf146 (FAM217A) Rabbit Polyclonal Antibody**

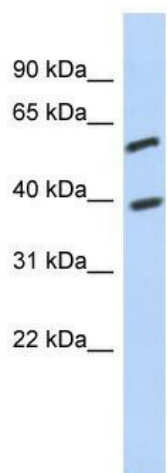
#### **Product data:**

Product Type:	Primary Antibodies
Applications:	WB
Recommended Dilution:	WB
Reactivity:	Human
Host:	Rabbit
Isotype:	IgG
Clonality:	Polyclonal
Immunogen:	The immunogen for anti-C6orf146 antibody: synthetic peptide directed towards the middle region of human C6orf146. Synthetic peptide located within the following region: ETLPAPNWNLKHGNSVVEENFTDESDLSENEKTNDTLLSYFKKVDLNLKP
Formulation:	Liquid. Purified antibody supplied in 1x PBS buffer with 0.09% (w/v) sodium azide and 2% sucrose.
Conjugation:	Unconjugated
Storage:	Store at -20°C as received.
Stability:	Stable for 12 months from date of receipt.
Predicted Protein Size:	57 kDa
Gene Name:	family with sequence similarity 217 member A
Database Link:	<a href="#">NP_775834</a> <a href="#">Entrez Gene 222826 Human</a> <a href="#">Q8IXS0</a>
Background:	The specific function of C6orf146 is not yet known.
Synonyms:	C6orf146
Note:	Human: 100%; Bovine: 93%; Rabbit: 93%; Dog: 92%; Mouse: 92%; Pig: 86%; Horse: 86%; Guinea pig: 86%; Rat: 85%



[View online »](#)

## Product images:



WB Suggested Anti-C6orf146 Antibody Titration:  
0.2-1 ug/ml; ELISA Titer: 1:312500; Positive  
Control: Jurkat cell lysate